

BARTELL

CONCRETE EQUIPMENT

Bartell Morrison Inc.
375 Annagem Blvd.,
Mississauga, ON, Canada
L5T 2A7

Toll Free (N.A.): 1 866 501 1683

Local: +1 905 364 4200

Fax: +1 905 364 4201

OWNER'S MANUAL AND PARTS BOOK

REVERSIBLE HYDRAULIC PLATE COMPACTORS

BR1570



**ORIGINAL
LANGUAGE**

Doc. # OI-B09044
Orig. Rel. - 10/2013
Curr. Rev. - 04
Rev. Date - 07/2014

Bartell Morrison Inc.
375 Annagem Blvd.
Mississauga, Ontario, Canada
L5T 3A7
Toll Free (N.A.): (866) 501-1683
Phone: (905) 364-4200
Facsimile: (905) 364-4201
www.bartellmorrison.com

Bartell Morrison (USA) LLC
200 Commerce Drive,
Freehold, New Jersey, USA
07728
Toll Free: 888-999-1570
Phone: (732) 566-5400
Facsimile: (732) 566-5444
www.bmiamerica.com

**ORIGINAL LANGUAGE PARTS MANUAL FOR
REVERSIBLE HYDRAULIC PLATE COMPACTOR**

© 2013 *Bartell Morrison Inc.*

No part of this work may be reproduced or transmitted in any form or by any means, electronic, or mechanical, including photocopying and recording, or by any information storage or retrieval system without the prior written permission of Bartell Morrison Inc, unless such copying is permitted by federal copyright laws.










Address inquiries or reference permission care of:

Bartell Morrison Inc.,
375 Annagem Blvd.,
Mississauga, Ontario,
Canada, L5T 3A7

Revision	Date	Description	Approved By:
00	10/2013	Initial Release	AL
01	01/2014	Cover photo updated.	AL
02	02/2014	Part number updated.	AL
03	05/2014	Part description updated.	AL
04	07/2014	Cover page updated.	AL

SAFETY PRECAUTIONS

BR1570

SAFETY PRECAUTIONS	
	<p> DANGER</p> <p>EXPLOSION HAZARD Never operate the machine in an explosive atmosphere, near combustible materials or where ventilation does not clear exhaust fumes.</p>
	<p> WARNING</p> <p>BURN HAZARD Never come into contact with the engine or muffler when engine is operating or shortly after it is turned off. Serious burns may occur.</p>
	<p> CAUTION</p> <p>MOVING PARTS Before starting the machine ensure that all guards and safety devices are in place and functioning properly.</p>
	<p> CAUTION</p> <p>MACHINE DAMAGE Never operate on hard, unyielding surfaces. Unwarranted damage may result.</p>
	<p> ATTENTION</p> <p>READ OWNERS MANUAL Read and understand operator's manual before using this machine. Failure to follow operating instructions could result in serious injury or death.</p>

OPERATOR'S MANUAL

BR1570

QUALITY ASSURANCE / MACHINE BREAK IN	5
WARRANTY INFORMATION	6
SPECIFICATIONS	7
PREVENTATIVE MAINTENANCE AND ROUTINE SERVICE PLAN	8
ROUTINE SERVICE INTERVALS	10
FOREWARD	11
SAFETY PRECAUTIONS	11
ASSEMBLY INSTRUCTIONS	11
OPERATING PRINCIPLE	11
STARTING PROCEDURE	11
STOPPING PROCEDURE	11
PRIOR TO OPERATION	12
OPERATION	12
MAINTENANCE	13
STORAGE	13
ASSEMBLY DRAWINGS AND PARTS LIST	
- VIBRATING PLATE	16
- BODY	18
- VIBRATOR	22
- CONTROL	26
- HAND PUMP ASSEMBLY	28
- WATER TANK (OPTION)	30

QUALITY ASSURANCE / MACHINE BREAK IN BR1570

The Bartell Vibratory Plate Compactor is the product of extensive engineering development designed to give long life and unmatched performance. The Compactors are shipped completely assembled with the exception of attaching the handle, and only require filling with fuel and a brief check of lubricant levels in preparation for operation. The exciter housing are pre-serviced with oil at factory.

You can help ensure that your Vibratory Plate Compactor will perform at top levels by observing a simple routing on first use. Consider that your new Compactor is like a new car. Just as you would break in a new car to the road or any new machine to the job, you should start gradually and build up to full use. Learn what your machine can do and how it will respond. Refer to the engine manufacturer's manual for run-in times. Full throttle and control may be used after this time period, as allowed by material. This will serve to further break in the machine on your specific application, as well as provide you with additional practice using the machine.

We thank you for the confidence you have placed in us by purchasing a Bartell Vibratory Plate Compactor and wish you many years of satisfied use.

WARRANTY

BR1570

Bartell agrees to furnish without charge, F.O.B. our plant, a replacement for any part or portion thereof, comprising the main unit of the Bartell Vibratory Plate Compactor, consisting of the exciter housing assembly, save and except drive belts, and power units, prove upon our examination, to be defective in either material or workmanship within a period of twelve (12) months from date of purchase, provided that notice of such defective part or portion thereof is given to Bartell Ltd. within the twelve month warranty period. No further or other guarantee or warranty expressed or implied in connection with the sale of the Compactor is given and our sole liability consists in replacing defective parts or portions thereof. We shall not be responsible for any special, indirect or consequential damages arising in any manner whatsoever.

This guarantee is for the sole benefit of the original purchaser as end user. Our responsibility under this guarantee ends in the case the original purchaser transfers ownership of the Vibratory Plate Compactor, makes any changes or adds any parts or devices not of our manufacture to the Compactor machine.

SPECIFICATIONS

BR1570

DIMENSIONS	
OVERALL LENGTH, mm (in.)	886 (35")
OVERALL WIDTH, mm (in.)	350 (14")
OVERALL HEIGHT, mm (in.)	880 (35")
PLATE SIZE (WxL), mm (in.)	350x480 (14"x19")
WEIGHT	
NET WEIGHT, kg. (lb.)	80 (177)
OPERATING WEIGHT, kg. (lb.)	85 (187.2)
PERFORMANCE	
TRAVELING SPEED, m/min (ft/min)	forward: 0~25 (0~82)
	backward: 0~25 (0~82)
VIBRATING FREQUENCY, Hz (vpm)	100 (6000)
CENTRIFUGAL FORCE, (kN (kgf))	3461 (15(1570))
WATER TANK CAPACITY (L)	15
POWER SOURCE	
MANUFACTURER	HONDA/ROBIN
MODEL	GX160/EX17
ENGINE PERFORMANCE	4.8(3.6)/5.7(4.2)
AT RPM	3600/4000
FUEL TANK CAPACITY (L)	3.3(3.1)/3.8(3.6)
STARTING SYSTEM	Recoil
OPTIONS	Water

ROUTINE SERVICE BR1570

Routine Service Intervals		Each use	After 1.5 months or 50 hrs	Each 3 months or 100 hrs	Each 6 months or 200 hrs	Each 9 months or 300 hrs	Each 12 months or 400 hrs
General Inspection:							
Guards	Check		o	o	o	o	o
	Check		o	o	o	o	o
	Check Operation		o	o	o	o	o
Engine:							
Engine Oil	Check Level	o	o	o	o	o	o
	Change		o		o		o
Oil Cooler	Clean			o	o	o	o
Cooling Fins	Clean		o	o	o	o	o
Air Cleaner	Check - Clean	o	o	o	o	o	o
	Replace						o
Air Intake Line	Check				o		
	Replace						2 yrs
Fuel Filter	Check & Clean			o	o	o	o
	Replace				o		o
Fuel Tank	Clean						500 hrs
Engine Wiring	Check						o
Exciter:							
Exciter Oil	Check Level	o	o	o	o	o	o
	Change	o			o		o
Drive Belt	Check Tightness	o	o	o	o	o	o
	Change				o		o

ROUTINE SERVICE INTERNALS

BR1570

Due to the nature and environment of use, plate compactors could be exposed to severe operating conditions. Some general maintenance guidelines will extend the useful life of your machine.

- The initial service for your compactor should be performed after 25 hours of use, at which time your mechanic (or authorized repair shop) should complete all of the recommended checks in the schedule above. The chart on page 6 (six) is handy for keeping a record of the maintenance performed and the parts used for servicing your compactor.
- Regular service according to the schedule above will prolong the life of the plate compactor and prevent expensive repairs.
- Keeping your plate compactor clean and free from debris is the single most important regular maintenance operation, over and above the checks in the service schedule above, that can be performed. After each use your compactor should be cleaned to remove any dust and debris from the undercarriage and surrounding components. Use of a power washer will make clean up quick and easy, especially if a non-stick coating was applied prior to use.
- In the Service Schedule above, items that should be checked, replaced or adjusted are indicated by "o" in the appropriate column. Not all plate compactor models include the same features and options and as such not all service operations may have to be performed. For ease of recording place a checkmark through the "o" when the item is complete. If an item is not required or not completed place an "x" through the "o" in the box.
- All compactors have governed engine speed of 3600 rpm. See engine manufacturer's manual for exact specifications. Care should be used when making any adjustments to the compactor not to change the governed speed. Running the engine at lower rpm's will result in a decrease of compaction force and lower travel speed. It will create excessive "out-of-synch" vibrations resulting in poor compaction, maneuverability, excessive wear to the machine, and discomfort to the operator.
- Failure to have your vibratory plate compactor regularly serviced and properly maintained in accordance with the manufacturer's instructions will lead to premature failure and void the warranty.

BR1570

FOREWORD

The Bartell Vibratory Plate Compactor is highly effective for a wide variety of surface, sub-soil, and back-fill materials. Although relatively light in weight and easy to operate, the Vibratory Plate Compactor delivers a tremendous impact to the soil. Pound for pound, the compactors provide a higher impact force. That means more productivity from our ideal combination of speed and deeper compaction.

SAFETY PRECAUTIONS

- Always keep unauthorized, inexperienced, untrained people away from this machine.
- Rotating and moving parts will cause injury if contacted. Make sure guards are in place. Keep hands and feet away from moving parts.
- Fuel the machine only when the engine is stopped, using all necessary safety precautions.
- The engine must always be stopped before attempting any repair or adjustments. Ignition switch should be off. Danger: Never operate the machine in an explosive atmosphere, near combustible materials or where ventilation does not clear exhaust fumes. Repair fuel leaks immediately. Refer to your engine owner's manual for more safety instructions.
- Be careful not to come in contact with the muffler when the engine is hot, serious burns may result!

ASSEMBLY INSTRUCTIONS

Your new Bartell Vibratory Plate Compactor has been shipped to you partially disassembled. Filling the fuel tank and a brief check of lubricant levels in preparation for operation is required. To complete the assembly the following instructions will be helpful.

- A) **HANDLE** – Refer to the particular final assembly diagram in this parts book that corresponds with your compactor model. Attach the one-piece handle with the screws and lock washers supplied.
- B) **EXCITER** – When installing the exciter assembly between the clamps, exciter housing should be located with an equal dimension protruding beyond the outside faces of the exciter clamps. The exciter clamp bolts must be torqued to 50 foot pounds. **DO NOT EXCEED THESE RECOMMENDATIONS.** Refer to the particular final assembly diagram in the parts book that corresponds with your compactor model.

OPERATING PRINCIPLE

An eccentric weight mounted on the exciter shaft contained within the exciter housing is driven at high speed by a clutch and belt drive system. This high speed shaft revolution causes the rapid lifting and downward ramming motion of the machine as well as imparting a forward motion.

The plate compactor is designed to run at an engine speed (engine take off shaft) of 3600 rpm. (normally considered full throttle).

Running the engine at lower rpm's will result in a decrease of compaction force and lower travel speed. It will create excessive "out-of-synch" vibrations resulting in poor compaction, maneuverability, excessive wear to the machine, and discomfort to the operator.

STARTING PROCEDURE:

* WARM CLIMATE

Open fuel valve on gas tank. Set throttle lever to "Fast" idle position, set choke to closed position, start engine. Open choke slightly to prevent flooding. Move to "Open" or "Run" position when engine is warm, increase throttle to maximum operation position (3600 rpm).

STARTING PROCEDURE:

* COLD CLIMATE

Follow same procedure as above but allow longer warm-up period – 3 to 5 minutes. In cold weather, oil is much heavier to move and requires more time to work its way into the moving parts. If maximum power is not attained, allow further warm-up time. Fill fuel tank with clean gasoline, use safety approved gas containers. **DO NOT MIX OIL WITH GASOLINE – USE UNLEADED GAS ONLY.**

STOPPING PROCEDURE

1. Throttle engine down.
2. Depress or turn off stop switch.

BR1570

PRIOR TO OPERATION

1. Make sure that all dirt, mud, etc., are thoroughly removed from the unit prior to operation. Special effort should be given to the bottom face of the vibrating plate and those areas adjacent to the cooling air inlet of engine, carburetor, and air cleaner.
2. Check all bolts and screws for tightness and make sure all bolts and screws are securely tightened. Loose bolts and screws may cause damage to the unit.
3. Check the V-belt for tightness. The normal slack should be approximately 10-15mm (1/2") when the belts are forcibly depressed in the middle position between the two sheaves. If there is excess belt play, there could be a decrease in the impact force or erratic vibration, causing machine damage.
4. Check the engine oil level and if the engine oil level is low, it should be refilled. Use the proper motor oil as suggested by the engine manufacturer.
5. Remove the oil plug in the excitor base and check the oil level. Make sure the compactor is level when checking. The oil level should be up to the oil plug. Every month or every 200 hours of operation, replace the oil. (Fig.1)

IMPORTANT:

- When changing the oil, the old oil can be drained by tipping the unit. The oil will drain easily while it is hot.

Season	Temperature	Grade of Exciter Oil
Summer	25C or higher	SAE#30
Spring/Fall	25C~10C	SAE#30, #20
Winter	0C~10C	SAE#10

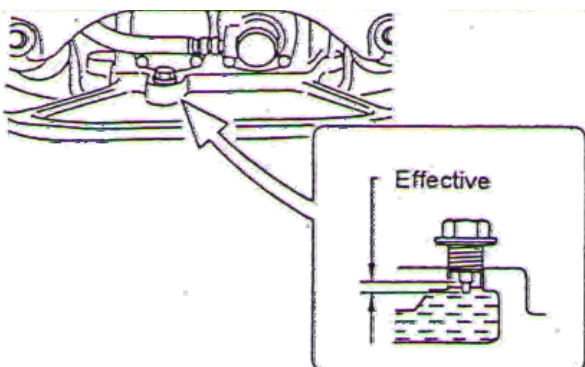


Fig.1

6. A regular grade gasoline should be used in the engine. When filling the fuel tank, make sure the fuel filter is used.

OPERATION

1. Opening the governor lever sharply causes the compactor to start working (Fig.2). When the engine speed reaches around 2300rpm, centrifugal clutch will be engaged. The lever should be operated quickly without hesitation, because increasing the engine speed slowly causes the clutch to slip.
2. Operate travel lever to have compactor travel forward or reverse. Push the lever forward for forward travel, pull it back for reverse and place it in neutral for vibration in place. (Fig.3)
When you work on soil which contains clay, there
3. may be cases where traveling speed drops because compaction plate does not leave ground surface as easily. Check the bottom of plate to see if clay has not stuck there. Incidentally, because compactor can not be as efficient on clayey or high moisture containing soil, dry such soil to appropriate moisture content level or carry out compaction twice.
To discontinue your work, contrary to the starting
4. time, return the governor lever quickly to LOW position. Do not move it slowly. (Fig.2)

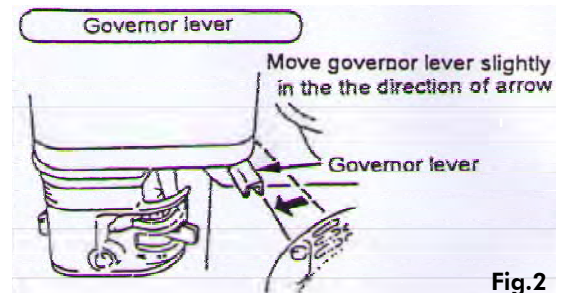


Fig.2

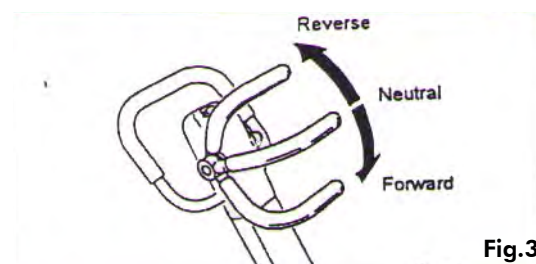


Fig.3

BR1570

MAINTENANCE

Maintaining your compactor will insure long life to the machine and its components.

AIR CLEANER - Keep air filter clean at all times. Wash away dust and debris using a non-oil based cleaning solvent. Let the filter dry before re-installing.

LUBRICATION – Always check engine oil regularly. Use proper engine oil as recommended. See chart below. Fill crankcase to levels as recommended in manufacture's engine manual.

SPARK PLUG – Check and clean spark plugs regularly. A fouled, dirty or carboned spark plug causes hard starting and poor engine performance. Set spark plug gap to recommended clearance. Refer to engine manual.

BELT TENSION – IMPORTANT!

If there is excessive belt play, there will be a decrease in the impact force and erratic vibration, which could cause machine damage. The normal belt play should be 1/2" to 5/8" which is attained by depressing the top section of the belt at the belt guard mounting bracket location. When adjusting the belt make sure that the clutch is in alignment with exciter pulley. Tighten all engine mount bolts, adjust the two engine-stop bolts, and tighten lock nuts.

STORAGE

The following steps should be taken to prepare your plate compactor for extended storage.

1. Close fuel shut off valve.
2. Siphon excess gasoline from tank.
3. Start engine until it stops from lack of fuel. This will use up all the fuel in the carburetor and prevent formation of deposits due to evaporation of fuel. Remove spark plug and pour 2 oz. of SAE 10W-30 motor oil into the cylinder. Slowly crank the engine 2 or 3 times to distribute the oil throughout the cylinder.
4. This will help prevent rust during storage. Replace spark plug.
5. Store the unit in an upright position in a cool, dry, well ventilated area.

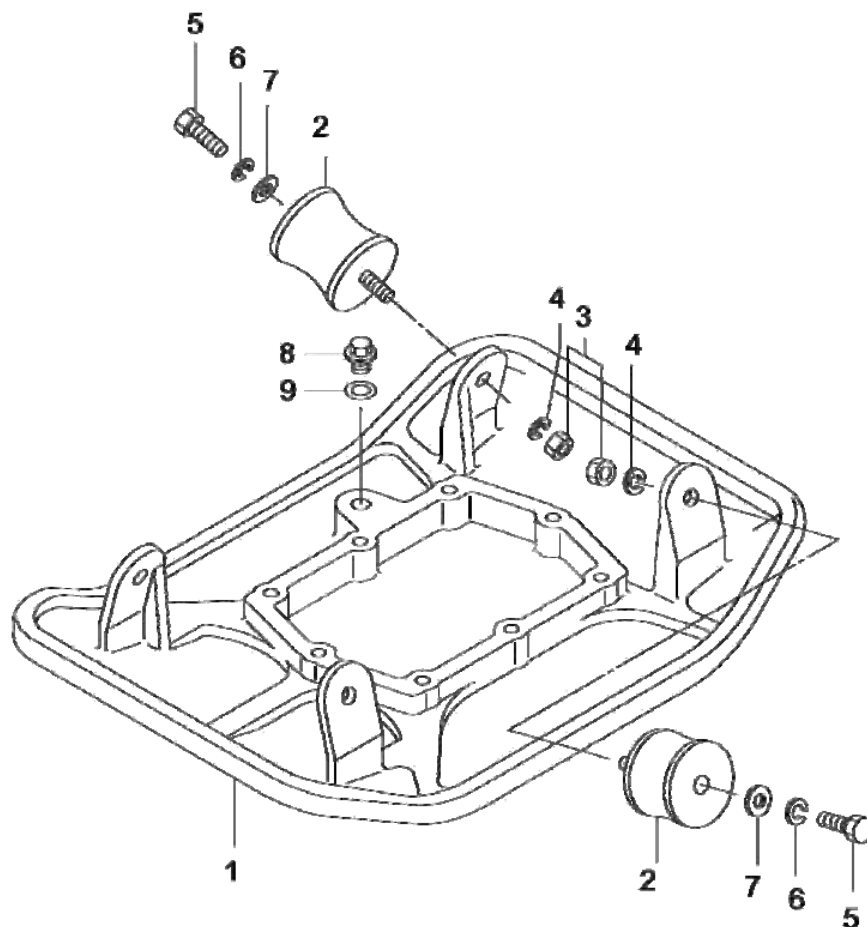
THIS PAGE HAS BEEN INTENTIONALLY LEFT BLANK

BR1570
ASSEMBLY DRAWINGS AND PARTS
LIST

PARTS LIST 1

BR1570

VIBRATING PLATE



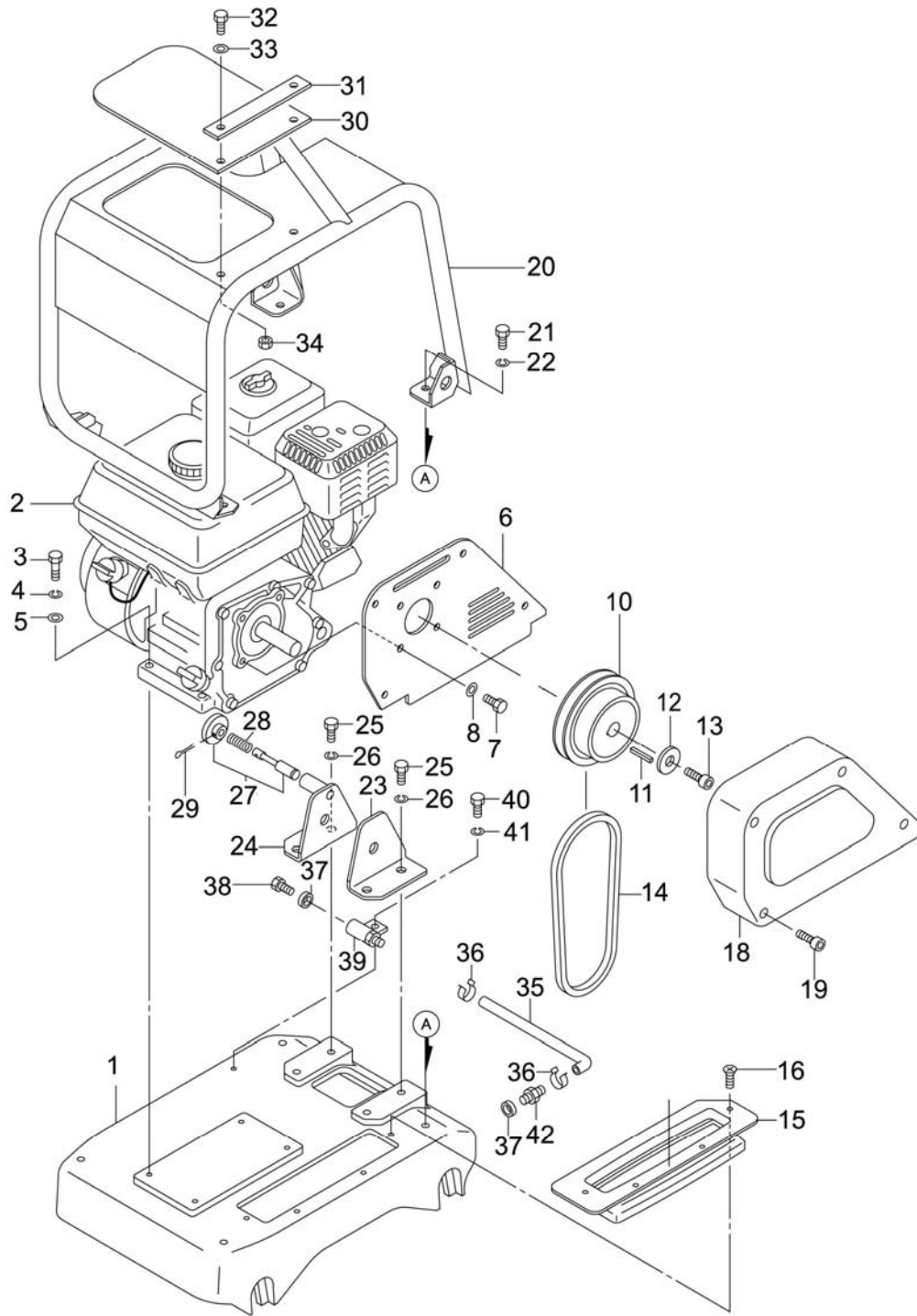
ITEM NO.	PART NO.	DESCRIPTION	QTY.	REMARKS
1	CPC-60-1A	VIBRATING PLATE	1	
2	CPC-60-2A	SHOCK ABSORBER	4	
3	CPC-60-3A	NUT M10	4	
4	CPC-60-4A	SW M10	4	
5	CPC-60-5A	BOLT M10x30T	4	
6	CPC-60-6A	SW M10	4	
7	CPC-60-7A	WASHER	4	
8	CPC-60-8A	OIL GAUGE	1	
9	CPC-60-9A	PACKING	1	

THIS PAGE HAS BEEN INTENTIONALLY LEFT BLANK

PARTS LIST 2

BR1570

BODY



PARTS LIST 2

BR1570

BODY

ITEM NO.	PART NO.	DESCRIPTION	QTY.	REMARKS
1	CPC-60-1B	BASE	1	
2	CPC-60-2B	ENGINE	1	
3	CPC-60-3B	BOLT M8x40T	4	
4	CPC-60-4B	SW M8	4	
5	CPC-60-5B	PW M8	4	
6	CPC-60-6B	BELT COVER PLATE	1	
7	CPC-60-7B	BOLT M8x20T	4	
8	CPC-60-8B	SW M8	4	
10	CPC-60-10B	CLUTCH ASSEMBLY	1	
11	CPC-60-11B	KEY	1	
12	CPC-60-12B	CLUTCH WASHER	1	
13	CPC-60-13B	SOCKET HEAD BOLT M8x25T	1	
14	CPC-60-14B	V-BELT	1	
15	CPC-60-15B	DUST COVER	1	
16	CPC-60-16B	FLAT HEAD SCREW M6x10T	4	
18	CPC-60-18B	BELT COVER OUT	1	
19	CPC-60-19B	SOCKET HEAD BOLT M8x70T	4	
20	CPC-60-20B	GUARD FRAME	1	
21	CPC-60-21B	BOLT M10x30T	4	
22	CPC-60-22B	SW M10	4	
23	CPC-60-23B	STAY (L) HANDLE	1	
24	CPC-60-24B	STAY (R) HANDLE	1	
25	CPC-60-25B	BOLT M10x30T	4	
26	CPC-60-26B	SW M10	4	
27	CPC-60-27B	STOPPER, GRIP SET	1	
28	CPC-60-28B	SPRING 1.2-10-29	1	
29	CPC-60-29B	SPRING PIN 2.5x16	1	
30	CPC-60-30B	RUBBER COVER	1	
31	CPC-60-31B	PLATE, RUBBER COVER	1	
32	CPC-60-32B	BOLT M6x25T	2	
33	CPC-60-33B	PW M6	2	
34	CPC-60-34B	NYLON NUT M6	2	
35	CPC-60-35B	DRAIN HOSE	1	

PARTS LIST 2

BR1570

BODY (cont'd)

ITEM NO.	PART NO.	DESCRIPTION	QTY.	REMARKS
36	CPC-60-36B	HOSE BAND 11.5D	2	
37	CPC-60-37B	WASHER, DRAIN PLUG	2	
38	CPC-60-38B	BOLT, DRAIN PLUG	1	
39	CPC-60-40B	JOINT	1	
40	CPC-60-40B	BOLT M8x20T	1	
41	CPC-60-41B	SW M8	1	
42	CPC-60-42B	UNION	1	

THIS PAGE HAS BEEN INTENTIONALLY LEFT BLANK

PARTS LIST 2

BR1570

VIBRATOR

ITEM NO.	PART NO.	DESCRIPTION	QTY.	REMARKS
C	CPC-60-C	VIBRATOR ASSEMBLY	1	
1	CPC-60-1C	VIBRATOR CASE	1	
2	CPC-60-2C	ROLLER BEARING 6206C4	4	
3	CPC-60-3C	ROTARY SHAFT, DRIVE	1	
4	CPC-60-4C	ROTARY SHAFT, DRIVEN	1	
5	CPC-60-5C	STOP RING S-35	4	
6	CPC-60-6C	KEY 10x8x19	1	
7	CPC-60-7C	GEAR (DRIVE)	1	
8	CPC-60-8C	GEAR (DRIVEN)	1	
9	CPC-60-9C	BEARING 6807C3	2	
10	CPC-60-10C	PISTON ROD	1	
11	CPC-60-11C	PIN 8x45	1	
12	CPC-60-12C	BEARING 6000ZZSG	2	
13	CPC-60-13C	STOP RING S-10	1	
14	CPC-60-14C	PISTON, 30D	1	
15	CPC-60-15C	PACKING USH-22.4x30x5	1	
16	CPC-60-16C	STOP RING R-26	1	
17	CPC-60-17C	ECCENT ROTATOR, DRIVE	2	
18	CPC-60-18C	ECCENT ROTATOR, DRIVEN	2	
19	CPC-60-19C	SOCKET HEAD BOLT M10x25	4	
20	CPC-60-20C	OIL SEAL	1	
21	CPC-60-21C	BEARING COVER	1	
22	CPC-60-22C	BOLT M8x	8	
23	CPC-60-23C	SW M8	8	
24	CPC-60-24C	PW M8	8	
25	CPC-60-25C	SEAL CAP	1	
26	CPC-60-26C	CYLINDER	1	
30	CPC-60-30C	BOLT M8x12T	1	
31	CPC-60-31C	COPPER PACKING 8x16x2	1	
32	CPC-60-32C	ELBOW	1	
33	CPC-60-33C	PULLEY	1	
34	CPC-60-34C	KEY 7x7x19	1	

PARTS LIST 3

BR1570

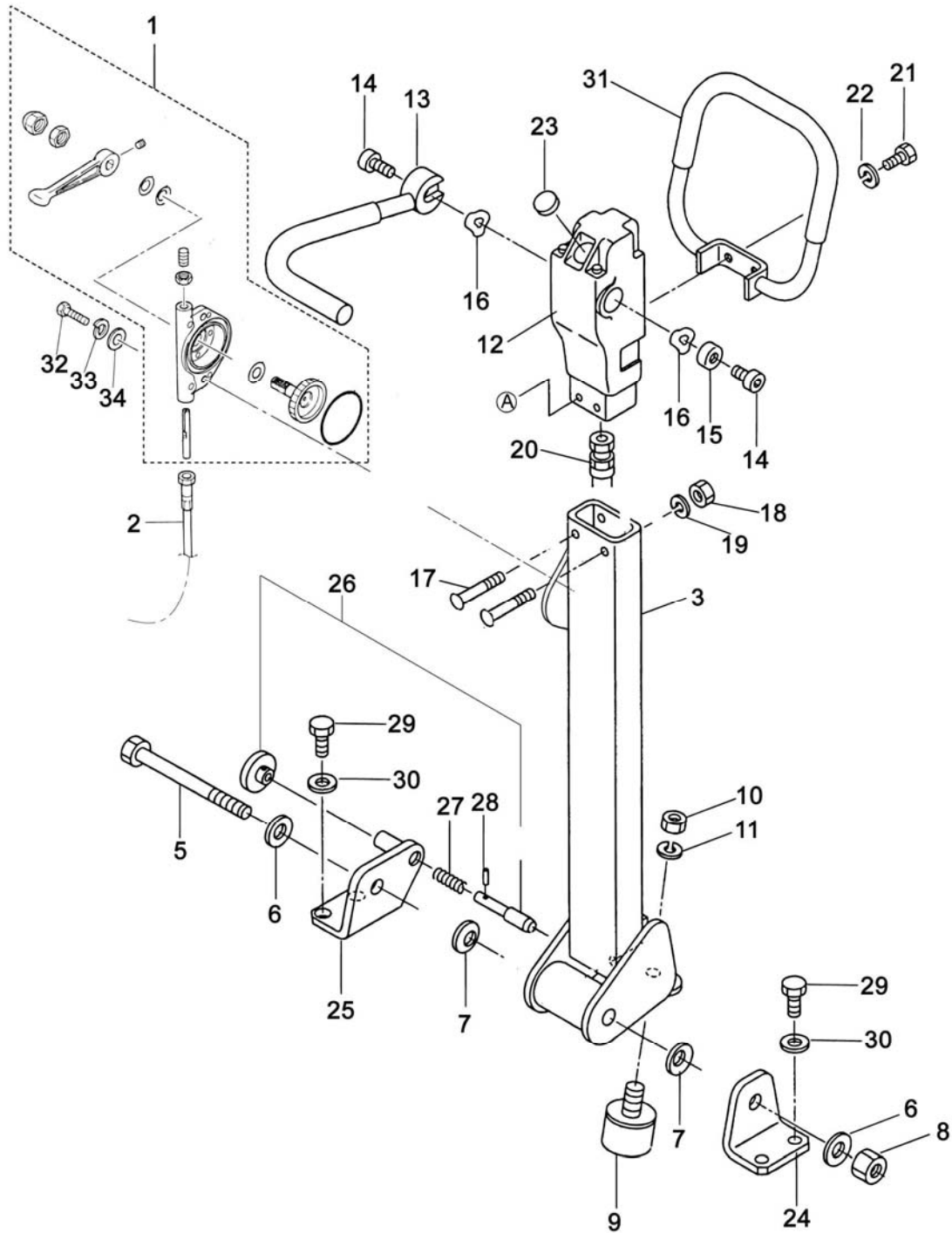
VIBRATOR (cont'd)

ITEM NO.	PART NO.	DESCRIPTION	QTY.	REMARKS
33	CPC-60-33C	PULLEY	1	
34	CPC-60-34C	WASHER, PULLEY	1	
35	CPC-60-35C	WASHER	1	
36	CPC-60-36C	SOCKET HEAD BOLT M8x15T	1	
37	CPC06-37OIL	BELT COVER (LOWER-OUT)	1	
38	CPC-350-38C	SOCKET HEAD BOLT M6x40t	5	
39	CPC-350-39C	BOLT M10x30T	2	
40	CPC-350-40C	BOLT M10x100T	6	

THIS PAGE HAS BEEN INTENTIONALLY LEFT BLANK

PARTS LIST 3 BR1570

CONTROL



PARTS LIST 3

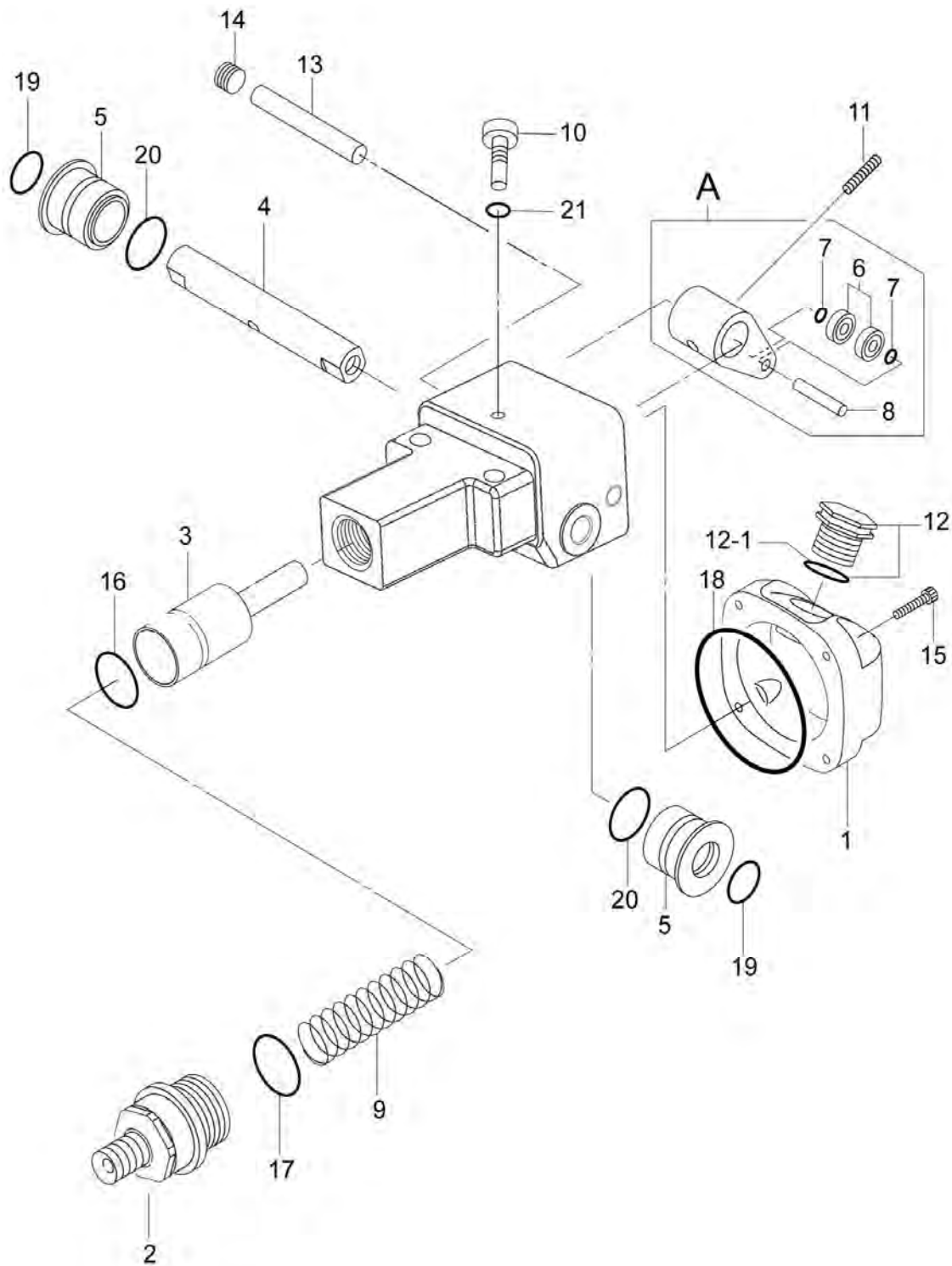
BR1570

CONTROL

ITEM NO.	PART NO.	DESCRIPTION	QTY.	REMARKS
1	CPC-60-1D	THROTTLE LEVER ASSEMBLY	1	
2	CPC-60-2D	THROTTLE WIRE	1	
3	CPC-60-3D	HANDLE AY	1	
5	CPC-60-5D	BOLT M16x145T	1	
6	CPC-60-6D	PW M16	2	
7	CPC-60-7D	CONICAL SPRING WASHER M16	2	
8	CPC-60-8D	NUT M16	2	
9	CPC-60-9D	SHOCK ABSORBER, STOPPER	1	
10	CPC-60-10D	NUT M10	1	
11	CPC-60-11D	SW M10	1	
12	CPC-60-12D	HANDLE PUMP ASSEMBLY	1	
13	CPC-60-13D	TRAVEL LEVER	1	
14	CPC-60-14D	SOCKET HEAD BOLT M10x20	2	
15	CPC-60-15D	COLLAR	1	
16	CPC-60-16D	WAVE WASHER 15.5x20x3	4	
17	CPC-60-17D	PUMP HOLDER M8x50T	2	
18	CPC-60-18D	NYLON NUT M8	2	
19	CPC-60-19D	SW M8	2	
20	CPC-60-20D	OIL HOSE	1	
21	CPC-60-21D	BOLT M8x20T	2	
22	CPC-60-22D	SW M8	2	
23	CPC-60-23D	BREATHER CAP	1	
24	CPC-60-24D	HANDLE BRACKET (L)	1	
25	CPC-60-25D	HANDLE BRACKET (R)	1	
26	CPC-60-26D	STOPPER	1	
27	CPC-60-27D	SPRING	1	
28	CPC-60-28D	SPRING PINK 2.5x16	1	
29	CPC-60-29D	BOLT M10x30T	4	
30	CPC-60-30D	SW M10	4	
31	CPC-60-31D	HANDLE GRIP	1	
32	CPC-60-32D	BOLT M6x25T	2	
33	CPC-60-33D	SW M6	2	
34	CPC-60-34D	PW M6	2	

PARTS LIST 4 BR1570

HAND PUMP ASSEMBLY



PARTS LIST 4

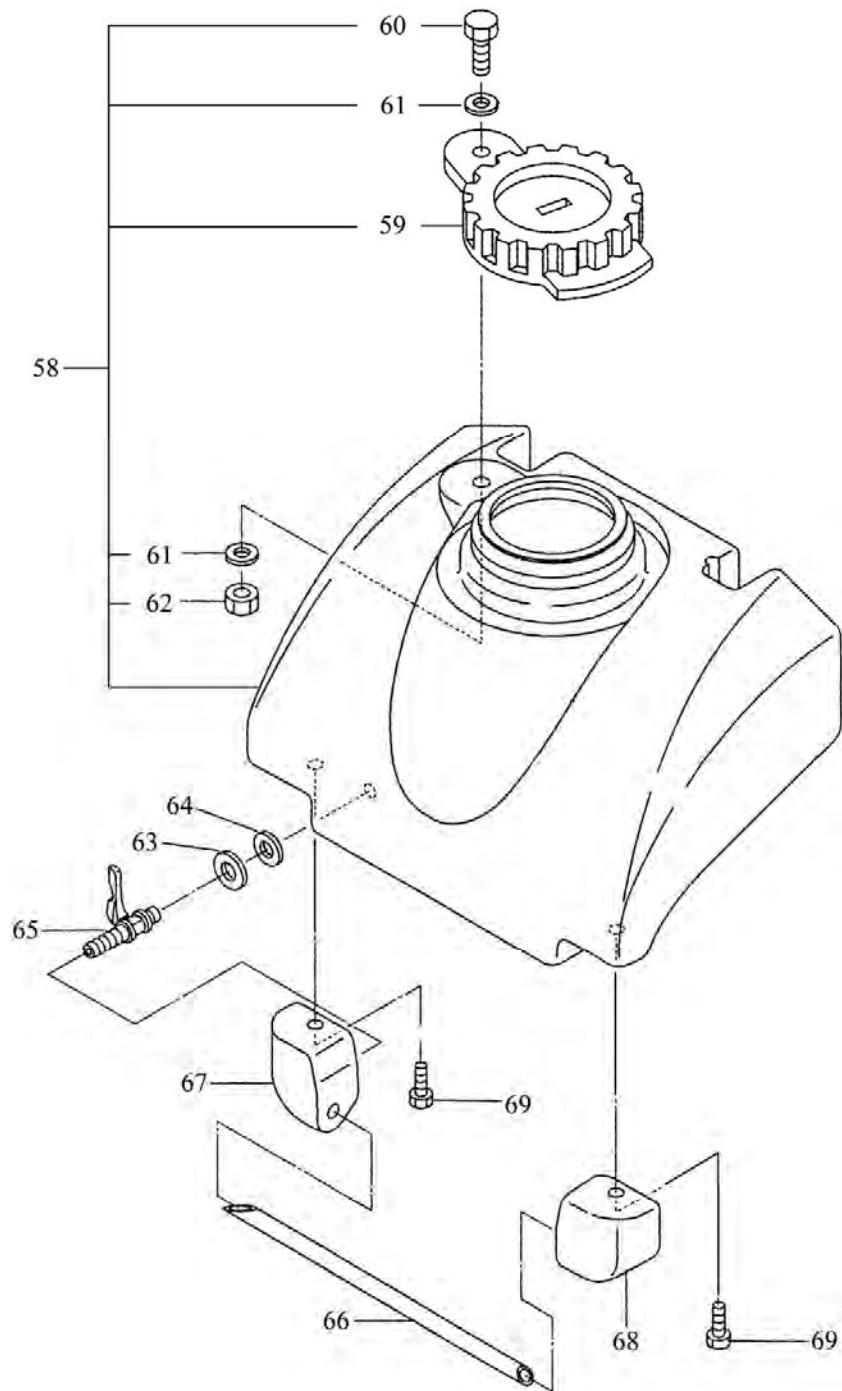
BR1570

HAND PUMP ASSEMBLY

ITEM NO.	PART NO.	DESCRIPTION	QTY.	REMARKS
1	CPC-60-1E	CAN CAMP (PUMP)	1	
2	CPC-60-2E	COVER (HAND PUMP)	1	
3	CPC-60-3E	PISTON CP	1	
4	CPC-60-4E	CONTROL SHAFT (PUMP)	1	
5	CPC-60-5E	BUSH	2	
6	CPC-60-6E	CAN (PUMP)	1	
7	CPC-60-7E	BEARING 607ZZ	2	
8	CPC-60-8E	SPACER	2	
9	CPC-60-9E	PIN 7x30	1	
10	CPC-60-10E	SPRING PIN	1	
11	CPC-60-11E	SPRING (PUMP)	1	
12	CPC-60-12E	STOPPER (PUMP)	1	
13	CPC-60-13E	PLUG	1	
14	CPC-60-14E	STOP PLUG	1	
15	CPC-60-15E	HOSE JOINT	1	
16	CPC-60-16E	SOCKET HEAD BOLT M6x35T	4	
17	CPC-60-17E	BREATHER (PUMP)	1	
18	CPC-60-18E	O-RING G-25	1	
19	CPC-60-19E	O-RING P-20	2	
20	CPC-60-20E	O-RING P-15	2	
21	CPC-60-21E	O-RING S-67	1	
22	CPC-60-22E	O-RING S-8	1	
23	CPC-60-23E	O-RING S-22	1	
24	CPC-60-24E	O-RING P-18	1	

PARTS LIST 5 BR1570

WATER TANK (OPTION)

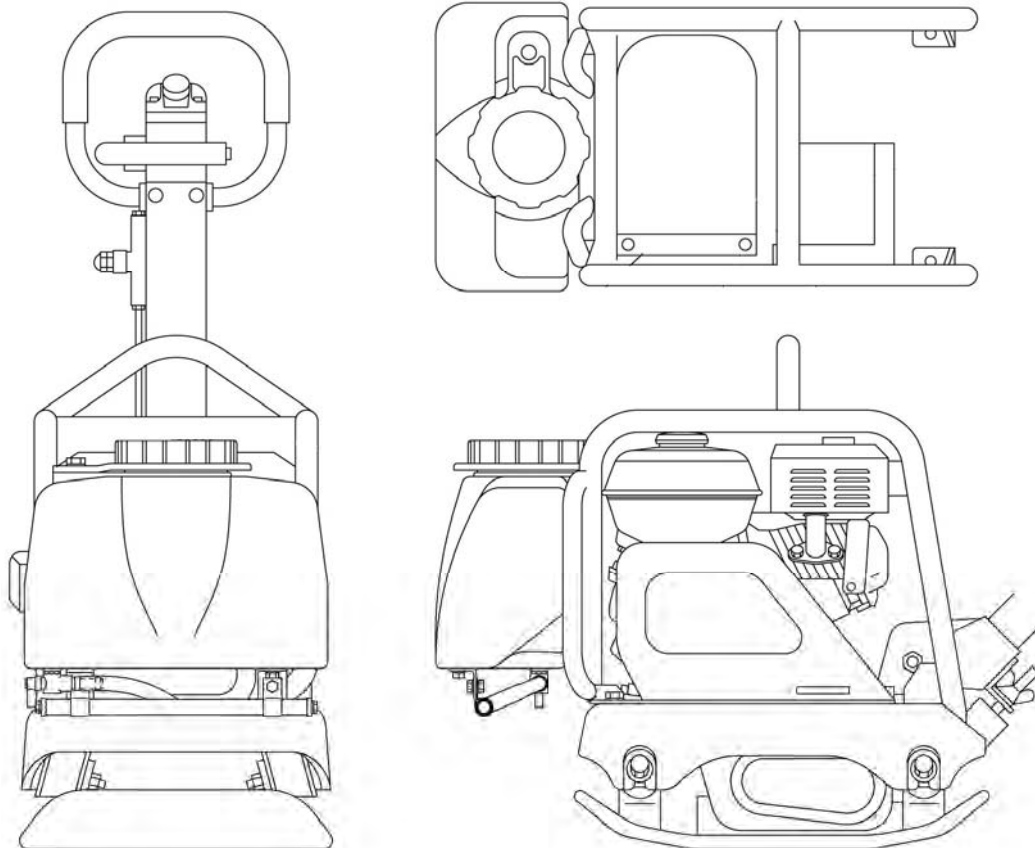


PARTS LIST 5

BR1570

WATER TANK (OPTION)

ITEM NO.	PART NO.	DESCRIPTION	QTY.	REMARKS
58	CPC-60-1E	WATER TANK ASSEMBLY	1	
59	CPC-60-2E	CAP, WATER TANK	1	
60	CPC-60-3E	BOLT, M10x30	1	
61	CPC-60-4E	WASHER 10.5x21x2	2	
62	CPC-60-5E	NYLON NUT M10	1	
63	CPC-60-6E	WASHER 14.5x30x1.6	1	
64	CPC-60-7E	PACKING 13x28x2	1	
65	CPC-60-8E	COCK	1	
66	CPC-60-9E	SPRINGLING PIPY	1	
67	CPC-60-10E	PIPE HOLDER LEFT	1	
68	CPC-60-11E	PIPE HOLDER RIGHT	1	
69	CPC-60-12E	FLANGE BOLT M8x25	2	



THIS PAGE HAS BEEN INTENTIONALLY LEFT BLANK



BARTELL

BARTELL MORRISON INC.



BARTELL MORRISON INC.

375 Annagem Blvd.
Mississauga, Ontario, Canada
L5T3A7

Toll Free: 866-501-1683

Local: 905-364-4200

Fax: 905-364-4201

www.bartellmorrison.com



BARTELL MORRISON (USA) LLC.

200 Commerce Dr.
Freehold, New Jersey, USA
07728

Toll Free: 888-999-1570

Local: 732-566-5400

Fax: 732-566-5444

www.bmiamerica.com

BARTELL morrison **SPE** **Innovatech™**
CONCRETE EQUIPMENT CONCRETE EQUIPMENT Surface Preparation Equipment

