



MARKONE HIRE

CONFINED SPACE

FALL PROTECTION

Entry Kits
Gas Detectors
Escape Sets
ATEX Approved Equipment
Fall Arrest /
Restraint Equipment
Man Anchor Systems

CONFINED SPACE/FALL PROTECTION SPECIALIST TEAM **01268 904000**

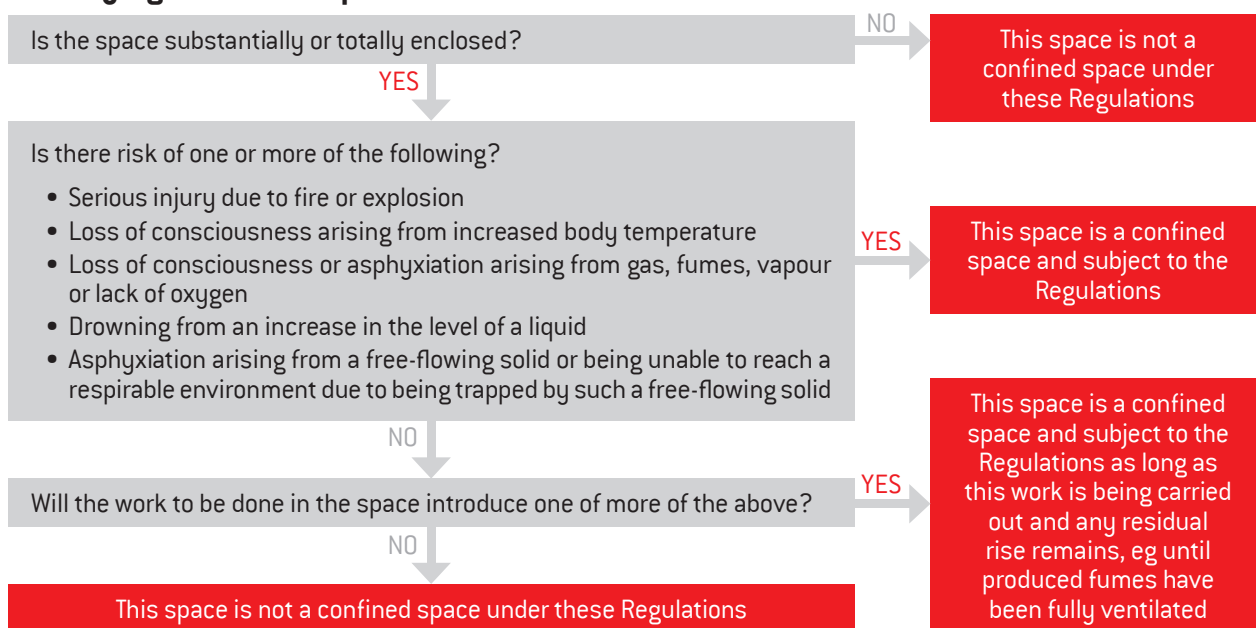
REGULATIONS AND USEFUL INFORMATION

CONFINED SPACE

What the law says

You must carry out a suitable and sufficient assessment of the risks for all work activities to decide what measures are necessary for safety. For work in confined spaces this means identifying the hazards present, assessing the risks and determining what precautions to take.

Identifying a confined space



RISK ASSESSMENTS & TRAINING

It is strongly advised that you seek relevant training prior to using any fall protection/confined space equipment and that the appropriate risk assessments have been undertaken before choosing any equipment.

To find out more about the range of training offered by Mark One Training call **01702 561818** or visit **www.mark1training.co.uk**

OTHER USEFUL INFORMATION

Confined Spaces: A Brief Guide to Working Safely (2013) - **www.hse.gov.uk/pubns/indg258.pdf**

The Confined Spaces Regulations 1997 **legislation.gov.uk/ukxi/1997/1713/contents**

HSE Safe work in confined spaces – **www.hse.gov.uk/pubns/books/L101.htm**

A Technical Guide to the Selection and Use of Fall Prevention and Arrest Equipment (HSE, 2005) – **www.hse.gov.uk/research/rrpdf/rr302.pdf**

The Work at Height Regulations 2005 – **www.legislation.gov.uk/ukxi/2005/735**

HSE Working at Height: A Brief Guide 2014 – **www.hse.gov.uk/pubns/indg401.pdf**

HSE's risk assessment and risk management website: **www.hse.gov.uk/risk**

CONFINED SPACE	4
ENTRY KITS	5
GAS DETECTION & ESCAPE KITS	7
AIR MOVERS	8
LIGHTING & RESCUE	9
FALL PROTECTION	11
FALL ARREST BLOCKS	13
MAN ANCHOR SYSTEMS	14
HARNESSES & ACCESSORIES	15
CABLE AVOIDANCE EQUIPMENT	19
PUMPS	20
GENERATORS	21
LIFTING	22
TRAINING	23

Why choose Mark One?

- ✓ Unrivalled customer service
- ✓ 20% off 4 week hires
- ✓ Helpful, knowledgeable team
- ✓ Dedicated training facilities
- ✓ Equipment you can rely on
- ✓ Easy payment options
- ✓ Prompt delivery and collection
- ✓ Specialist departments





CONFINED SPACE

Entry kits • Gas detectors • Escape sets
Air movers • Lighting and Rescue

WHAT IS A CONFINED SPACE?

Any space of an enclosed nature where there is a risk of death or serious injury from hazardous substances or dangerous conditions (e.g. lack of oxygen).

Some confined spaces are fairly easy to identify (i.e. enclosures with limited openings):

- Storage tanks
- Silos
- Reaction vessels
- Enclosed drains
- Sewers

Others may be less obvious, but can be equally dangerous, for example:

- Open top chambers
- Vats
- Combustion chambers in furnaces etc.
- Duct work
- Unventilated or poorly ventilated rooms

ATMOSPHERIC HAZARDS

The most common hazard seen in confined spaces is that of atmospheric hazards. These affect air quality and present immediate hazards to health or life.

Acceptable atmospheric conditions must be verified before entry and monitored continuously while the space is occupied.

TRAINING

Confined space training outlines the skills and protocols of safe entry into confined spaces and includes precautions such as testing of breathable air quality, forced ventilation, observation of workers in the space, and a pre-determined rescue plan.

You must ensure that you have had adequate training and certification prior to undertaking any work in a confined space.

To find out more about the range of training offered by Mark One Training call **01702 561818** or visit **www.mark1training.co.uk**



TRIPOD

This lightweight portable aluminium tripod can easily be set up by one person. It is ideal for confined space entry and emergency rescue applications and can accommodate a variety of winches and fall arrest devices.

TECHNICAL SPECIFICATION

Maximum SWL:	250 kg
Weight:	17 kg
Height:	1.4 m to 2.4 m
Footprint:	1.43 m

HIRE RATES

Code	1 week Individual rate	1 week kit rate	4 week rate
250200	£50.00	£40.00*	£36.00**

* Applies to 2+ item hires **price per week

TRIPOD RESCUE BLOCK/WINCH

Designed to fit on our tripod, this winch is primarily used as a fall arrest block when descending or egressing a confined space where ladders or steps are available for use. In the event of an emergency the winch can be used as a rescue block to evacuate personnel.

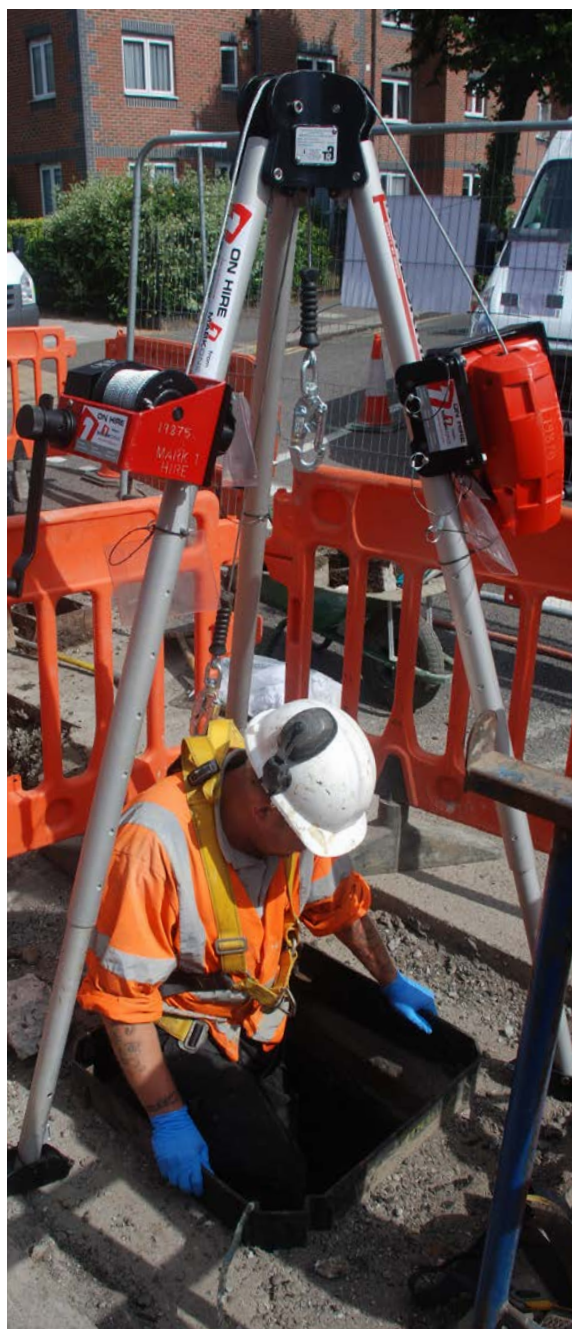
TECHNICAL SPECIFICATION

Maximum SWL:	136 kg
Weight (with bracket):	11.3 kg
Length:	18 m

HIRE RATES

Code	1 week Individual rate	1 week kit rate	4 week rate
250215	£40.00	£30.00*	£27.00**

* Applies to 2+ item hires **price per week



TRIPOD MAN RIDING WINCH

A man riding winch is used when no aid for descent is present. It attaches to our tripods and can be used to either lower/raise personnel or work materials.



TECHNICAL SPECIFICATION

Maximum SWL:	250 kg
Weight (with bracket):	14.6 kg
Length:	20 m

HIRE RATES

Code	1 week Individual rate	1 week kit rate	4 week rate
250225	£40.00	£30.00*	£27.00**

* Applies to 2+ item hires **price per week

WARNING - EQUIPMENT SPECIFICATION MAY VARY SLIGHTLY. IF IN DOUBT PLEASE PHONE TO CHECK.

All prices shown exclude VAT. Long term rates must be agreed at time of hire.



COUNTERWEIGHT DAVIT ARM

This counterweight system is used to raise and lower personnel or work equipment/materials where a large void cannot be spanned by a conventional tripod.

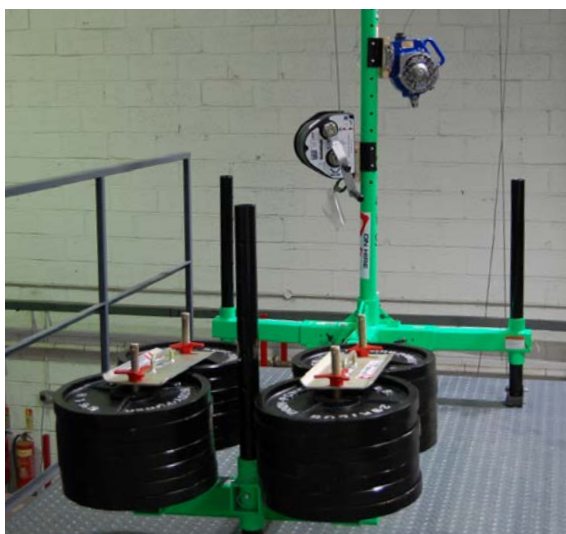
TECHNICAL SPECIFICATION

Mast Height adjustment:	1.98 m - 2.23 m
Equipment Dimensions (L x W):	1820 mm x 1460 mm
Equipment empty weight:	106.8 kg
Removable weights:	27 x 25 kg (675 kg)

HIRE RATES

Code	1 week Individual rate	1 week kit rate	4 week rate
250350	£350.00	£300.00*	£295.00**

* Applies to 2+ item hires **price per week



DAVIT MAN RIDING WINCH

This man riding winch attaches to our Davit arm and is used when no aid for descent is present. It can be used to lower/raise either personnel or work materials.



TECHNICAL SPECIFICATION

Maximum Lift Distance:	20 m
Maximum SWL:	250 kg
Weight:	17.2 kg

HIRE RATES

Code	1 week Individual rate	1 week kit rate	4 week rate
250360	£60.00	£50.00*	£45.00**

* Applies to 2+ item hires **price per week

WARNING - EQUIPMENT SPECIFICATION MAY VARY SLIGHTLY. IF IN DOUBT PLEASE PHONE TO CHECK.

All prices shown exclude VAT. Long term rates must be agreed at time of hire.

DAVIT RESCUE BLOCK/WINCH

Designed to fit on our Davit arm, this winch is primarily used as a fall arrest block when descending or egressing a confined space where ladders or steps are available for use. In the event of an emergency the winch can be used as a rescue block to evacuate personnel.

TECHNICAL SPECIFICATION

Maximum Lift Distance:	18 m
Maximum SWL:	205 kg
Weight:	14.1 kg

HIRE RATES

Code	1 week Individual rate	1 week kit rate	4 week rate
250355	£60.00	£50.00*	£45.00**

* Applies to 2+ item hires **price per week



BOSUN'S CHAIR

The Bosun's chair is ideal for maintenance, window cleaning, confined space intervention or other suspension work applications. Due to the comfort and support offered by this seat a user can work more efficiently for longer periods of time without tiring or suffering negative effects of suspension in a harness alone. To be used in conjunction with a fall arrest system. Can be used with our Tripod (page 5) or Davit arm (page 6).

TECHNICAL SPECIFICATION

Weight:	8 kg
Maximum SWL:	136 kg

HIRE RATES

Code	1 week	4 weeks
250218	£29.00	£23.25*

*price per week

GAS DETECTOR

Portable gas detectors are used for the detection of flammable gases, oxygen depletion and an extensive range of toxic gases. Should the unit detect a gas level outside a pre-set safe limit, an alarm will sound accompanied by a flashing light, warning the individual to evacuate the area.

TECHNICAL SPECIFICATION

Dimensions:	103 mm x 58 mm x 30 mm
Weight:	182 g
Operating temperature:	-20 °C to +50 °C
Battery Life:	Up to 20 hours
Gasses Detected:	Oxygen O ₂ , Carbon Monoxide CO, Hydrogen Sulphide H ₂ S + Combustibles – LEL

HIRE RATES

Code	1 week Individual rate	1 week kit rate	4 week rate
250320	£40.00	£30.00*	£27.00**

* Applies to 2+ item hires **price per week



10 MINUTE EMERGENCY ESCAPE SET

Once activated, this emergency escape breathing apparatus automatically begins feeding a continuous supply of compressed air for up to 10 minutes, to allow for a safe, effective and uncomplicated escape from hazardous environments.

TECHNICAL SPECIFICATION

Size (H x L x D):	510 x 260 x 190 mm
Cylinder charging pressure:	200 bar
LDV Output flow:	500 L/min
Operating Temperature range:	-15 °C to +60 °C
Weight (including cylinder):	4.9 kg
Cylinder:	2 L 200 bar
Style:	Full Face mask

HIRE RATES

Code	1 week Individual rate	1 week kit rate	4 week rate
250310	£30.00	£25.00*	£22.00**

* Applies to 2+ item hires **price per week

10 MINUTE EMERGENCY ESCAPE SET WITH HOOD

This Emergency Escape Breathing apparatus has a hood design which enables it to be worn by those with beards or glasses. Technical spec same as product above.

HIRE RATES

Code	1 week	4 weeks
250315	£30.00	£22.00*

*price per week



WARNING - EQUIPMENT SPECIFICATION MAY VARY SLIGHTLY. IF IN DOUBT PLEASE PHONE TO CHECK.

All prices shown exclude VAT. Long term rates must be agreed at time of hire.

CONFINED SPACE/FALL PROTECTION
SPECIALIST TEAM **01268 904000**

AIR MOVER

Using 300mm diameter ducting, this air mover can move up to 60m³/min. The fan is **NOT** ATEX rated and so must only be used to force air into an explosive atmosphere with the unit being upwind and away from the access hatch if used for confined spaces. It must not be used to extract from a potentially explosive atmosphere.

TECHNICAL SPECIFICATION

Blade Diameter:	300 mm
Voltage:	110/230 v
Power:	520 w
Rotation Speed:	2800 r/min
CFM:	195
Air Flow:	3600 (m ³ /hr)
Static Pressure:	343 (pa)
Decibel Rating:	85 dBA
Static pressure:	343 (pa)
Dimensions:	40.5cm x 32cm x 35.8cm (h x w x d)

HIRE RATES

Code	1 week Individual rate	1 week kit rate	4 week rate
160060	£69.00	£55.00*	£45.00**

* Applies to 2+ item hires **price per week



ATEX AIR MOVER

A portable fan for ATEX Approved zones 1 & 2. It can be used to either vent or extract fumes from a potentially explosive area and is ideal for confined spaces, chemical plants, oil refineries, ship building, vessels, tanks and more.

TECHNICAL SPECIFICATION

Ducting Diameter:	300 mm
Airflow:	70 m ³ /min
Casing Material:	Anti-static glass reinforced ABS
Voltage:	110 v (16amp)
Size (L x W):	380 mm x 410 mm
Weight:	20 kg

HIRE RATES

Code	1 week Individual rate	1 week kit rate	4 week rate
250380	£120.00	£100.00*	£90.00**

* Applies to 2+ item hires **price per week



AIR MOVER 5M DUCTING

This flexible ducting is available in 5m lengths so that you can direct the flow to where you need it. The ducts can be joined together using a trunking joint to form longer lengths.

HIRE RATES

Code	1 week Individual rate	1 week kit rate	4 week rate
12DUCT	£9.50	£7.50*	£6.00**

* Applies to 2+ item hires **price per week

ATEX ANTISTATIC 5M DUCTING

This flexible antistatic ducting is available in 5m lengths so that you can direct the flow to where you need it. The ducts can be joined together using a trunking joint to form longer lengths.

HIRE RATES

Code	1 week Individual rate	1 week kit rate	4 week rate
250385	£25.00	£25.00*	£20.00**

* Applies to 2+ item hires **price per week

WARNING - EQUIPMENT SPECIFICATION MAY VARY SLIGHTLY. IF IN DOUBT PLEASE PHONE TO CHECK.

All prices shown exclude VAT. Long term rates must be agreed at time of hire.



ATEX TORCH

This battery powered LED ATEX Safety Torch gives high output performance in a right-angle body. It is CE marked to the ATEX Directive for safe use in Zones 1 and 2 potentially explosive gas and Zones 21 and 22 dust atmospheres.

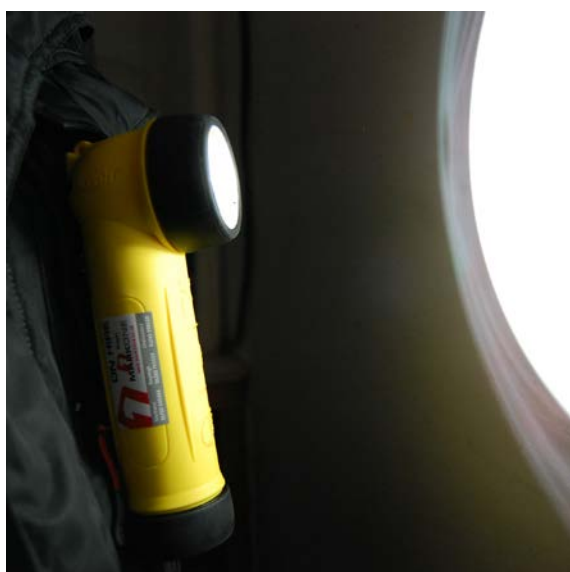
TECHNICAL SPECIFICATION

Power:	2 x 1.5V D cell batteries LR20
Duration:	27 hours
Temperature Class:	T4
Weight:	0.50 kg

HIRE RATES

Code	1 week Individual rate	1 week kit rate	4 week rate
250395	£10.00	£8.00*	£7.00**

* Applies to 2+ item hires **price per week



ATEX HEADTORCH

This ATEX LED HT-400 Headtorch is the ideal compact unit for hands free lighting, particularly where access is difficult, or where climbing or crawling is required. It is CE marked to the ATEX Directive for safe use in Zones 1 and 2 potentially explosive gas and Zones 21 and 22 dust atmospheres.

TECHNICAL SPECIFICATION

Power:	3 x 1.5V AAA cell batteries
Duration:	8.5 hours
Temperature Class:	T4
Weight:	0.090kg

HIRE RATES

Code	1 week Individual rate	1 week kit rate	4 week rate
250395	£10.00	£8.00*	£7.00**

* Applies to 2+ item hires **price per week



RESCUE STRETCHER

This rescue stretcher is designed for horizontal and vertical hoisting. When the patient is packaged, the stretcher becomes rigid. The durable plastic provides protection for the patient, while allowing extrication through the most demanding confined spaces. The stretcher is rolled for storage into a backpack, which is included with the hire.

TECHNICAL SPECIFICATION

Weight:	27 kg
Size (supplied in backpack):	230 mm x 915 mm
Size (Laid out flat):	915 mm x 2440 mm

HIRE RATES

Code	1 week Individual rate	1 week kit rate	4 week rate
250335	£55.00	£45.00*	£40.00**

* Applies to 2+ item hires **price per week



WARNING - EQUIPMENT SPECIFICATION MAY VARY SLIGHTLY. IF IN DOUBT PLEASE PHONE TO CHECK.

All prices shown exclude VAT. Long term rates must be agreed at time of hire.

CONFINED SPACE TRAINING

£125pp + VAT

- Group discounts available
- Open courses run on a weekly basis at our purpose built facilities
- Courses can be scheduled for a minimum of 3 delegates



www.mark1training.co.uk

**MARKONE**
TRAINING



FALL PROTECTION

There are two very different forms of fall protection so it is crucial that you are familiar with the difference between the two in order to understand where and why each system should be specified

FALL RESTRAINT

- These systems prevent workers from reaching a hazard
- Fall restraint systems usually include a lanyard/line which is adjusted to a fixed length and attached to an anchor point
- The length of the lanyard/ line and its deflection is critical (if too long it will not stop a fall, but if too short it will prevent the person from reaching the work area)

FALL ARREST

- This method allows workers to reach a point where a fall could occur, and fall restraint cannot be used
- They have built in systems to arrest any falls and reduce the forces generated to the body
- Fall arrest systems consist of an anchor point, an arrest system and a full body harness

RISK ASSESSMENT

Before using either system the user should undertake their own risk assessment to determine which is best.

Comprehensive information, instructions and training should be sought to ensure the user knows how to wear, adjust and inspect all equipment used.

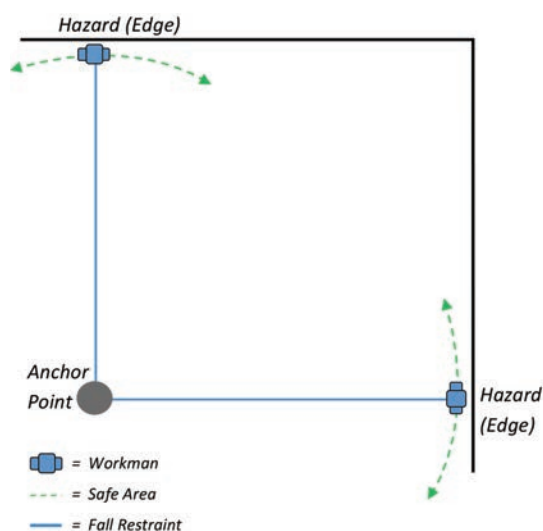
RESCUE

Following a fall there is a legal obligation to have a predetermined, full and comprehensive rescue plan in place. It is important to be rescued within 15 minutes and to practice rescue techniques regularly. Calling 999 is not the answer.

FALL PROTECTION

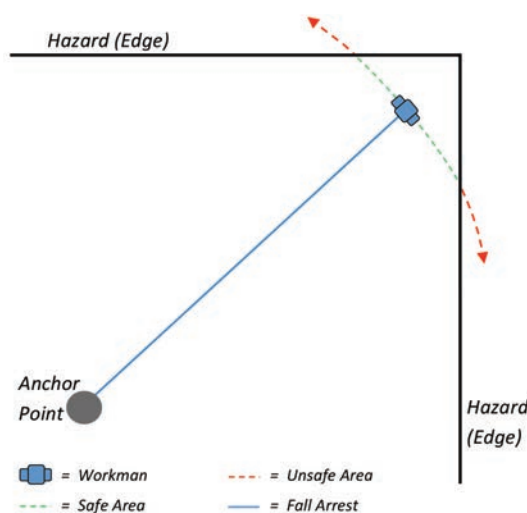
Fall Restraint

This is the safest option when using Fall Protection Equipment, as it restrains the worker from falling off the edge.



Fall Arrest

Where there is a possibility of the worker falling off of the edge within his/her working perimeter then fall arrest equipment must be used.



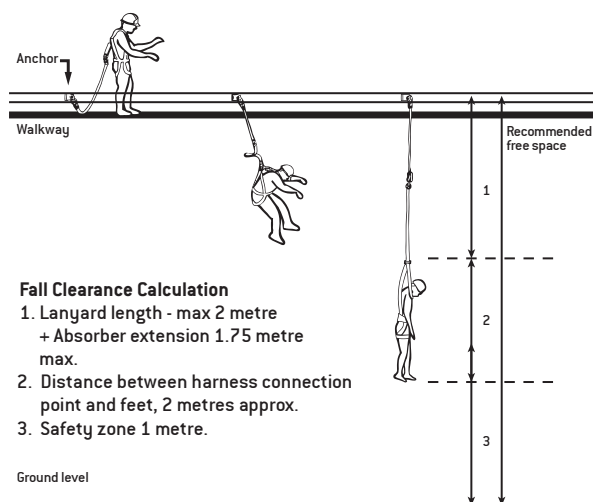
THINGS TO BE AWARE OF:

Fall Clearance / Bottoming Out

Bottoming out refers to the situation where a worker comes in contact with any lower levels/obstruction during a fall; properly designed fall arrest systems should prevent this. Ensure that you have correctly calculated your fall clearance, this should take into consideration factors such as: maximum lanyard length, maximum absorber extension, measurement from harness attachment point to feet and a safety zone from the floor.

Pendulum Effect

As you move sideways from your anchor point you increase the chance of swinging if you fall. The more you swing the greater the force with which you will collide with any obstacles/the floor. The pendulum effect must always be taken into consideration when undertaking your risk assessment.



FALL ARREST BLOCKS

These multi-purpose fall arrest blocks come in three different lengths (3m, 10m and 18m) and allow for uninhibited movement during normal working activity. In the event of a fall, a breaking mechanism within the block is engaged to arrest the fall.



TECHNICAL SPECIFICATION

	3 m	10 m	18 m
Capacity:	3 m Webbing	10 m Wire Rope	18 m Wire Rope
Weight:	1.1 kg	4.1 kg	6.5 kg
Dimensions:	150 mm x 80 mm x 60 mm	244 mm x 183 mm x 144 mm	300 mm x 226 mm x 144 mm
Arrest Force:	Circa 4 kN	Circa 3.5 kN	Circa 3.5 kN
Total Arrest Distance:	1.4 m	1.6 m	1.6 m
Brake Lock Distance:	100 mm	200 mm	200 mm
Maximum User Weight:	136 kg	136 kg	136 kg

HIRE RATES

Code	Description	1 week	4 weeks
250220	3 m Block	£25.00	£20.00*
250205	10 m Block	£49.00	£39.00*
250210	18 m Block	£59.00	£47.00*

*price per week

GOTCHA RESCUE KIT

This rescue system is designed for rescuing a suspended casualty from fall-arrest lanyards, rope safety lines and fall arrest blocks. It provides rescue for a single casualty, allowing you to raise or lower them to the nearest point of safety.

NOTE: OPERATOR MUST BE FULLY TRAINED ON THIS EQUIPMENT BEFORE ATTEMPTING A RESCUE



TECHNICAL SPECIFICATION

Weight:	11 kg
Pack Dimensions:	628 mm x 280 mm x 180 mm
Capacity:	33 m
Maximum User Weight:	100 kg

HIRE RATES

Code	1 week	4 weeks
250300	£55.00	£44.00*

*price per week



WARNING - EQUIPMENT SPECIFICATION MAY VARY SLIGHTLY. IF IN DOUBT PLEASE PHONE TO CHECK.

All prices shown exclude VAT. Long term rates must be agreed at time of hire.

CONFINED SPACE/FALL PROTECTION
SPECIALIST TEAM **01268 904000**



FALL ARREST BLOCKS

MAN ANCHOR SYSTEM: COUNTERWEIGHT

This freestanding counterweight system provides an anchor point for personnel performing work on flat roofs or structures. The anchor is fall arrest rated and can be used as a single anchor point system.

TECHNICAL SPECIFICATION

Weight:	340 kg
Maximum User Weight:	141 kg
Roof Types:	Concrete, Bitumen, Asphalt sanded & Asphalt stone chippings
Maximum Roof Pitch:	5°

HIRE RATES

Code	1 week	4 weeks
250240	£100.00	£80.00*

*price per week



MAN ANCHOR SYSTEM: WATER FILLED

This unique anchoring system is constructed of a special natural rubber material that holds the bag in a solid cube form when filled with water, allowing it to be used as an anchor point for personnel.

TECHNICAL SPECIFICATION

Weight (Empty):	8 kg
Weight (Full):	430 kg
Capacity:	430 lts
Dimensions:	1.45 m x 1.45 m x 0.2 m
Maximum User Weight:	100kg
Roof Types:	EPDM, Mineral felts, Concrete, Metal deck
Maximum Roof Pitch:	15°

HIRE RATES

Code	1 week	4 weeks
250245	£100.00	£80.00*

*price per week



WARNING - EQUIPMENT SPECIFICATION MAY VARY SLIGHTLY. IF IN DOUBT PLEASE PHONE TO CHECK.

All prices shown exclude VAT. Long term rates must be agreed at time of hire.



RESCUE HARNESS

Two-point safety harness, with rear 'D' and front chest attachment points. The front 'D' is centrally located to ensure loads are spread evenly, and the rear 'D' has an additional rescue strop attached.

Features:

- Front and rear 'D' attachment point
- Carbon steel fittings black powder coated
- Shock absorbing rear dorsal
- Lightweight and easy to don
- Contrast colour stitch for easy inspection
- Water repellent and UV resistant polyester webbing
- Two colour body to leg webbing



HIRE RATES

Code	1 week	4 weeks
250500	£10.00	£8.00*

*price per week

PURCHASE PRICE

£40.95 + VAT

HI-VIS JACKET SAFETY HARNESS

This 2-point jacket harness comes in high visibility yellow with reflective strips. Designed to be worn all day, this harness is very comfortable to wear thanks to the elasticated webbing to the upper body.

Features:

- Rear dorsal anchor point
- Elasticated webbing to upper body
- Quick release buckles
- Fully adjustable to upper body, legs and chest



PURCHASE PRICE

£90.00 + VAT

SINGLE POINT HARNESS

This rear single-point, full body harness is our standard universal sized harness.

Features:

- Single rear attachment point
- 3 points of adjustment on legs and chest
- Sub-pelvic support strap
- Universal sizing
- Two colour body to leg webbing



HIRE RATES

Code	1 week	4 weeks
350160	£10.00	£8.00*

*price per week

PURCHASE PRICE

£23.25 + VAT

FEMALE 3-POINT HARNESS

Designed for females, this harness offers good support around the hips and the design negates the need for a chest support.

Features:

- Waist belt
- 2x work positioning 'D' attachment points
- Padded sit type leg loops
- Shock absorbing rear dorsal



PURCHASE PRICE

£75.60 + VAT

WARNING - EQUIPMENT SPECIFICATION MAY VARY SLIGHTLY. IF IN DOUBT PLEASE PHONE TO CHECK.

All prices shown exclude VAT. Long term rates must be agreed at time of hire.

NEW

CLIMAX BASIC PLUS HARNESS

WITH 2 X KARABINERS & 1M LANYARD



FOR SALE
£22.50 +VAT

**MARKONE**

ADJUSTABLE RESTRAINTS 1.2M/2M

These adjustable restraints come in two lengths (1.2m and 2m) and are lightweight and simple to use. Each restraint comes with two karabiners as standard.



TECHNICAL SPECIFICATION

	1.2 m Restraint	2 m Restraint
Minimum Length:	0.85 m	1.2 m
Maximum Length:	1.2 m	2 m

HIRE RATES

Code	Description	1 week	4 weeks
250404	1.2 m Restraint	£8.00	£6.50*
250406	2 m Restraint	£8.00	£6.50*

*price per week

PURCHASE PRICE

1.2 m Restraint	£24.00 + VAT
2 m Restraint	£25.00 + VAT

1.5M ROPE RESTRAINT

This standard restraint lanyard has a 10.5mm rope diameter and is ideal for restraining or work positioning.

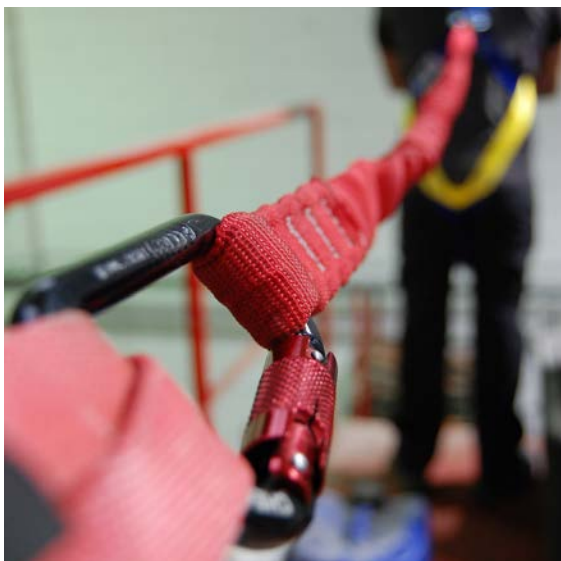


PURCHASE PRICE

£14.00 + VAT

2M SHOCK ABSORBERS LANYARD

This light and compact lanyard absorbs through a unique displacement core, with the outer cover acting as a secondary backup and protection, so no shock absorbing pouch is required. Comes with two karabiners as standard.



HIRE RATES

Code	Description	1 week	4 weeks
250408	Shock Absorbing Lanyard	£8.00	£6.50*

*price per week

PURCHASE PRICE

£36.23 + VAT

1M/2M ANCHOR STROP

These 25mm polyester anchor strops are used for quick and simple temporary anchorage to a large variety of structures, and are available in 1m and 2m lengths.



PURCHASE PRICE

1 m Strop	£4.20 + VAT
2 m Strop	£5.60 + VAT

WARNING - EQUIPMENT SPECIFICATION MAY VARY SLIGHTLY. IF IN DOUBT PLEASE PHONE TO CHECK.

All prices shown exclude VAT. Long term rates must be agreed at time of hire.



KARABINER

This standard Karabiner has a double action mechanism, that automatically closes and has a manual screw lock to keep all components of your safety system firmly attached.



PURCHASE PRICE

£6.00 + VAT

ROPE GRAB

This automatic rope grab system is the ideal solution for vertical and inclined fall arrest protection, such as on ladders or sloping roofs. It is suitable to use on 11mm and 12mm diameter kernmantle fibre rope.



HIRE RATES

Code	Description	1 week	4 weeks
250430	Rope Grab	£9.00	£7.00*

*price per week

SCAFFOLD HOOK

This oversized connector is used to hook onto scaffolding.



HIRE RATES

Code	1 week	4 weeks
PPEH06	£4.00	£3.00*

*price per week

PURCHASE PRICE

£28.35 + VAT

5M/10M ROPE

This 11mm diameter kernmantle fibre rope comes in two lengths (5m and 10m) and includes a thimble and stop end.



PURCHASE PRICE

5 m Rope	£29.00 + VAT
10 m Rope	£35.00 + VAT

WARNING - EQUIPMENT SPECIFICATION MAY VARY SLIGHTLY. IF IN DOUBT PLEASE PHONE TO CHECK.

All prices shown exclude VAT. Long term rates must be agreed at time of hire.



CAT SCANNER

This Network Rail approved scanner can be used individually to trace buried live electric cables, or in conjunction with the Genny to find conductive pipes and cables. The Strike Alert feature alerts the user to shallow power cables on the display, and the Avoidance Scan speeds up scanning times and improves safety.

NOTE: Even if using a CAT4 & Genny4 ALWAYS DIG WITH CAUTION



HIRE RATES

Code	1 day	+1 day	1 week	4 weeks
250130	£29.00	£10.00	£49.00	£39.00*

*price per week

RD8000 CAT

The Network Rail approved RD8000 is used individually for tracing buried live electrical cables. With a wide range of in-depth features such as iLoc, Bluetooth connection, third-party information uploading and much more, this scanner is the next step up from our standard CAT scanner.



HIRE RATES

Code	1 day	+1 day	1 week	4 weeks
250120	-	-	£139.00	£111.00*

*price per week

CABLE AVOIDANCE TRANSMITTER (GENNY)

Used in conjunction with a CAT Scanner for tracing cables and pipes underground that have no signal going through them, this transmitter can be clamped to conductive pipes or a flexi-trace to allow the user to scan for specific cables and pipes.



HIRE RATES

Code	1 day	+1 day	1 week	4 weeks
250140	£29.00	£10.00	£49.00	£39.00*

*price per week

TX-100 TRANSMITTER (GENNY)

The TX-100 transmitter is used for tracing cables and pipes underground in conjunction with the RD8000 CAT.



HIRE RATES

Code	1 day	+1 day	1 week	4 weeks
250125	-	-	£99.00	£79.00*

*price per week

FLEXITRACE PIPE TRACER

This Flexitrace is used for locating ducts, pipes and drains. The unit can be easily transported and deployed by one person. It is used for Line Location, whereby you feed the rod into the duct, pipe or drain and attach a signal generator (genny) to one terminal of the unit and the other terminal to an earth stake; the rod can then be located using a CAT scanner.

HIRE RATES

Code	1 day	+1 day	1 week	4 weeks
295080	£40.00	£17.50	£75.00	£60.00*

*price per week



WARNING - EQUIPMENT SPECIFICATION MAY VARY SLIGHTLY. IF IN DOUBT PLEASE PHONE TO CHECK.

All prices shown exclude VAT. Long term rates must be agreed at time of hire.



PUDDLE SUCKER PUMP

This submersible pump is specifically designed to pump out residue down to 1mm of water. It is ideally suited for nuisance water found on flat surfaces in flooded buildings.

Includes 6m of hose.



TECHNICAL SPECIFICATION

Voltage:	110 v (16amp)
Machine Size (H x D):	316 mm x 196 mm
Weight:	12 kg
Capacity:	170 L per min
Maximum Suction Lift:	11 metres
Hose Diameter:	25 mm

HIRE RATES

Code	1 day	+1 day	1 week	4 weeks
240010	£35.00	£12.00	£59.00	£47.00*

*price per week

1" SUBMERSIBLE PUMP

This small submersible pump is designed for clean or slightly dirty water. Its top-discharge design makes it ideal for immersion applications where space is restricted.

Includes 6m of hose.



TECHNICAL SPECIFICATION

Voltage:	110 v (16amp)
Machine Size (W x L x H):	160 mm x 200 mm x 365 mm
Weight:	6.3 kg
Capacity:	170 L per min
Maximum Suction Lift:	7 metres
Hose Diameter:	25 mm

HIRE RATES

Code	1 day	+1 day	1 week	4 weeks
240020	£19.00	£6.50	£32.00	£25.50*

*price per week

2" SUBMERSIBLE PUMP

This medium submersible pump is designed for heavy pumping jobs. It can cope with water containing sand or silt and can be used to pump things such as swimming pools, foundations etc.

Includes 6m of hose.



TECHNICAL SPECIFICATION

Voltage:	110 v (16amp)
Machine Size (W x L x H):	185 mm x 341 mm x 328 mm
Weight:	11.3 kg
Capacity:	205 L per min.
Maximum Suction Lift:	12 metres
Hose Diameter:	50 mm

HIRE RATES

Code	1 day	+1 day	1 week	4 weeks
240040	£29.00	£5.00	£39.00	£31.00*

*price per week

3" SUBMERSIBLE PUMP

This large submersible pump is designed for very heavy pumping jobs, or medium/heavy jobs that need to be done very quickly. It can pump water containing sand or silt.

Includes 6m of hose.



TECHNICAL SPECIFICATION

Voltage:	110 v (16amp)
Machine Size (W x L x H):	190 mm x 310 mm x 505 mm
Weight:	26.9 kg
Capacity:	830 L per min
Maximum Suction Lift:	10 metres
Hose Diameter:	75 mm

HIRE RATES

Code	1 day	+1 day	1 week	4 weeks
240055	£45.00	£17.00	£79.00	£63.00*

*price per week

WARNING - EQUIPMENT SPECIFICATION MAY VARY SLIGHTLY. IF IN DOUBT PLEASE PHONE TO CHECK.

All prices shown exclude VAT. Long term rates must be agreed at time of hire.



2KVA PETROL GENERATOR

This 2Kva generator's noise reducing casing and acoustic panelling produces super silent operation. It's inverter technology delivers super stable clean power with a pure sine wave form - essential for powering sensitive electronics and computers. It is lightweight, compact and easy to carry/transport.



TECHNICAL SPECIFICATION

Machine Size (WxHxL):	290 mm x 425 mm x 510 mm
Weight (Dry):	21 kg
Voltage Output:	2 x 240v
Fuel:	Petrol
Performance:	1.6 Kw Continuous
Noise level:	52dB @ 7 m

HIRE RATES

Code	1 day	+1 day	1 week	4 weeks
180007	£45.00	£15.00	£75.00	£60.00*

*price per week

2.7KVA PETROL GENERATOR

Designed for tough working situations, with its full metal frame and metal control box, this 2.7Kva petrol generator gives an output of 2.2Kva continuous.

Sockets:

- 1 x 110v 16amp
- 1 x 240v 16amp



TECHNICAL SPECIFICATION

Machine Size (WxHxL):	420 mm x 410 mm x 610 mm
Weight (Dry):	36 kg
Voltage Output:	110 v (16 amp) / 240 v (16amp)
Fuel:	Petrol
Performance:	2.2 Kva Continuous
Noise level:	70dB at 7m

HIRE RATES

Code	1 day	+1 day	1 week	4 weeks
180010	£25.00	£7.00	£39.00	£31.00*

*price per week

4KVA DIESEL GENERATOR

This portable 4Kva diesel generator has a heavy-duty frame making it ideal for site work, and comes on wheels for easy transportation.

Sockets:

- 1 x 16amp 110v
- 1 x 32amp 110v
- 1 x 16amp 240v
- 240v and 110v output
- Safety circuit breakers



TECHNICAL SPECIFICATION

Machine Size (WxHxL):	475mm x 560mm x 775mm
Weight (Dry):	84kg
Voltage Output:	110v (16 amp) / 110v (32amp) 240v (16amp)
Fuel:	Diesel
Performance:	3.2Kva Continuous
Noise level:	71dB at 7m

HIRE RATES

Code	1 day	+1 day	1 week	4 weeks
180030	£59.00	£20.00	£99.00	£79.00*

*price per week

5KVA PETROL GENERATOR

With its full metal frame and full metal control box, this portable 5Kva petrol generator is ideal for site work.

Sockets:

- 1x 110v 16amp
- 1x 110v 32amp
- 2x 240v 16amp



TECHNICAL SPECIFICATION

Machine Size (WxHxL):	480mm x 540mm x 690mm
Weight (Dry):	59kg
Voltage Output:	110 v (16 amp) / 110 v (32amp) / 240 v (16amp)
Fuel:	Petrol
Performance:	4Kva Continuous
Noise level:	70dB at 7m

HIRE RATES

Code	1 day	+1 day	1 week	4 weeks
180035	£45.00	£17.00	£79.00	£63.00*

*price per week

WARNING - EQUIPMENT SPECIFICATION MAY VARY SLIGHTLY. IF IN DOUBT PLEASE PHONE TO CHECK.

All prices shown exclude VAT. Long term rates must be agreed at time of hire.

HYDRAULIC MANHOLE LIFTER

Designed for lifting heavy manhole covers up to 900mm by 900mm, this hydraulic manhole lifter comes with different length keys.

NOTE: Always break seal before lifting and use a gas detector.

TECHNICAL SPECIFICATION

Safe Working Load:	1.5 ton
Capacity:	900 mm x 900 m manholes

HIRE RATES

Code	1 day	+1 day	1 week	4 weeks
230125	£55.00	£22.00	£99.00	£79.00*

*price per week



MANHOLE SAFETY BARRIER

This 4-way manhole safety barrier makes manholes or other small holes safe in seconds, and folds flat for easy transportation.

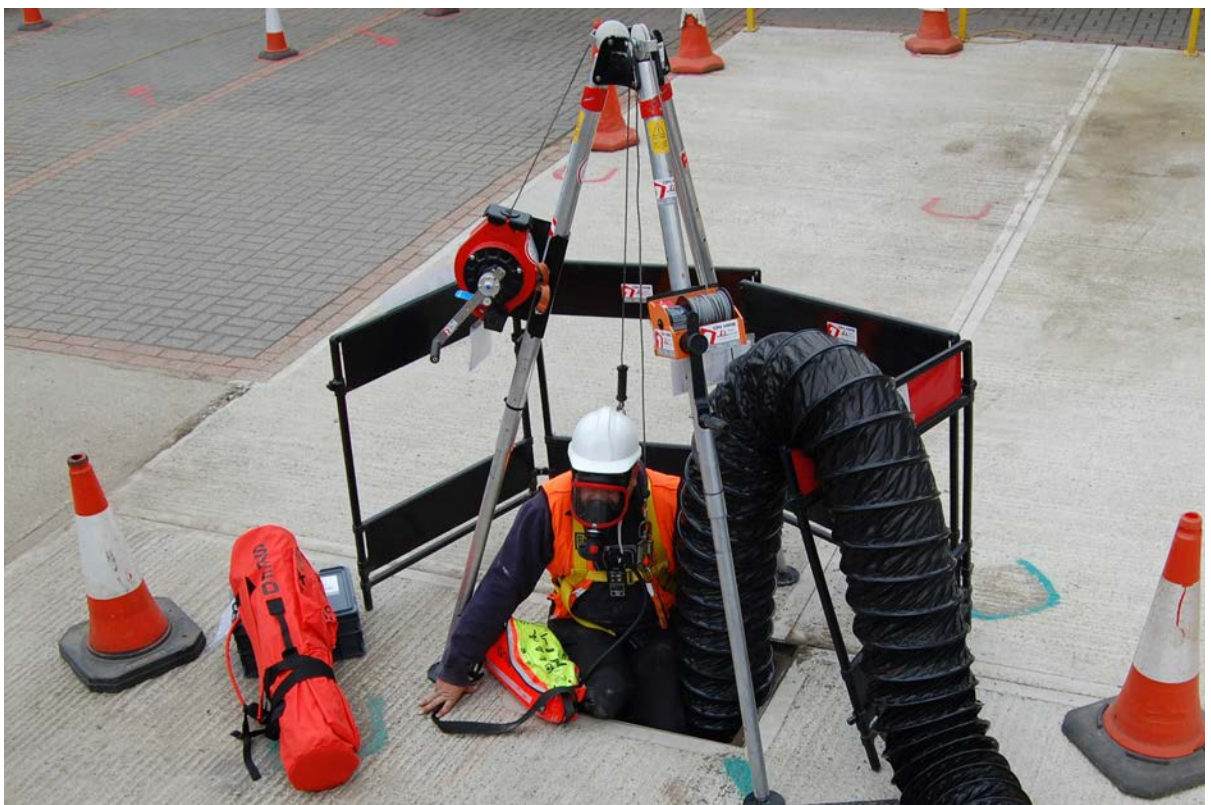
TECHNICAL SPECIFICATION

Dimensions (WxHxL):	840 mm x 1040 mm x 840 mm
Weight:	8 kg

HIRE RATES

Code	1 day	+1 day	1 week	4 weeks
MANHOLE	£19.00	£5.00	£29.00	£23.00*

*price per week



WARNING - EQUIPMENT SPECIFICATION MAY VARY SLIGHTLY. IF IN DOUBT PLEASE PHONE TO CHECK.

All prices shown exclude VAT. Long term rates must be agreed at time of hire.



WORKING AT HEIGHT

This half day course is designed to help employers and employees comply with the latest Working at Height Regulations (2005). It will give the delegate a working knowledge of regulations, how to assess the risks and select the correct equipment for safe working.

HARNESS TRAINING

This half day course covers the safe use and inspection of harnesses. If you require IPAF Harness please speak to one of our Training team.

PRICES

WEEKDAY / ON-SITE*

SATURDAY

	1 course	2 courses in one day	1 course	2 courses in one day
1	£85.00	£160.00	£85.00	£160.00
2	£85.00	£160.00	£85.00	£160.00
3	£80.00	£150.00	£80.00	£150.00
4	£75.00	£140.00	£75.00	£140.00
5	£70.00	£130.00	£70.00	£130.00
6	£65.00	£120.00	£65.00	£120.00
Group Price			Group Price	
7 - 10	£450.00		£450.00	
ADDITIONAL PLACES 11+	£45.00 each		£45.00 each	

CONFINED SPACE

A comprehensive one day, low/medium risk course suitable for people working in the construction industry (rail, asbestos, hospitals, ventilation, cleaning and maintenance) in confined space areas. Delegates will be trained on how to safely enter and exit a confined space.

PRICES

WEEKDAY / ON-SITE*

SATURDAY

	Price per person	Price per person
1	£125.00	£160.00
2	£125.00	£160.00
3	£120.00	£145.00
4	£110.00	£135.00
5	£105.00	£120.00
6	£100.00	£110.00
Group Price		Group Price
7 - 10	£650.00	£750.00
ADDITIONAL PLACES 11+	£65.00 each	£65.00 each

*Travel to site will incur additional costs
On-site training is subject to minimum numbers of delegates
All prices shown exclude VAT

- Training centres in Southend, Chelmsford and Basildon
- Group discounts available
- On-site training courses available (costs dependent on requirements)
- Saturday and bespoke courses tailored to your needs
- Lunch provided at Mark One Training centres on all full day courses

Other courses available, please visit www.mark1training.co.uk

MARK ONE TRAINING
CALL: 01702 561818

BOOK ONLINE: www.mark1training.co.uk

E-MAIL: info@mark1training.co.uk





**Confined Space/Fall Protection
Specialist Team and Basildon Hire Centre**

Unit 9 • Yardley Business Park
Pipps Hill • Basildon • SS14 3GL

Tel: **01268 904000**

Email: basildon@mark1hire.co.uk

Southend Hire Centre

Purdeys Way • Purdeys Ind. Estate
Rochford • Essex • SS4 1ND

Tel: **01702 545454**

Email: southend@mark1hire.co.uk

Rayleigh Hire Centre

34 Eastwood Road
Rayleigh • Essex • SS6 7JQ

Tel: **01268 745533**

Email: rayleigh@mark1hire.co.uk

Chelmsford Hire Centre

5 Argyll Road • Springfield
Chelmsford • Essex • CM2 6PY

Tel: **01245 399150**

Email: chelmsford@mark1hire.co.uk

www.mark1hire.co.uk