

Dräger Saver CF Donning procedure



PROCEDURE



1 Place neck strap of carrying bag over head. Adjust length of strap until equipment sits in the centre of chest. Fix waistbelt, if fitted, and adjust by pulling the free end until equipment is secure and comfortable.



2 Grip the loop on the lid of the carrying bag and pull firmly upward to break the anti-tamper tag. Open the flap of the bag which then releases the locking clip from the valve turning on the air supply to the hood.



3 Immediately remove the hood from the carrying bag.



4 Place both hands inside the hood neck seal, place chin inside half mask and pull hood over head from front to back.



5 Position half mask over nose and mouth and breath normally.



6 Immediately leave the hazardous area by the shortest and safest route.

Safety Warning:
Do not remove the equipment until in a safe area and clear of hazard.

PRE-OPERATIONAL CHECKS



Check contents gauge ensuring the cylinder is fully pressurised (i.e. 200 bar). The gauge needle must be inside the green segment of the gauge face.



An intact anti-tamper device ensures full performance. If this device is broken the unit must be checked.

EQUIPMENT



Saver CF10
order code:- 335 0492



Saver CF15
order code:- 335 0491

ACCESSORIES



Spare Cylinder
10 min
order code:- 335 0255
15 min
order code:- 335 0256



Anti-Tamper Tags
pack of 5
order code:- 335 0388/K



Anti-Static Bag 10min
order code:- 335 0646
Anti-Static Bag 15min
order code:- 335 0647



Safety Wash
1 litre Dispenser
order code:- 338 0164
1 litre Refill
order code:- 338 0165
5 litre Dispenser
order code:- 338 0166
5 litre Refill
order code:- 338 0167



Waistbelt
order code:- 335 0396



Storage Cabinets
order code:- 335 0424
Wall Mounting Kit
order code:- 335 0431

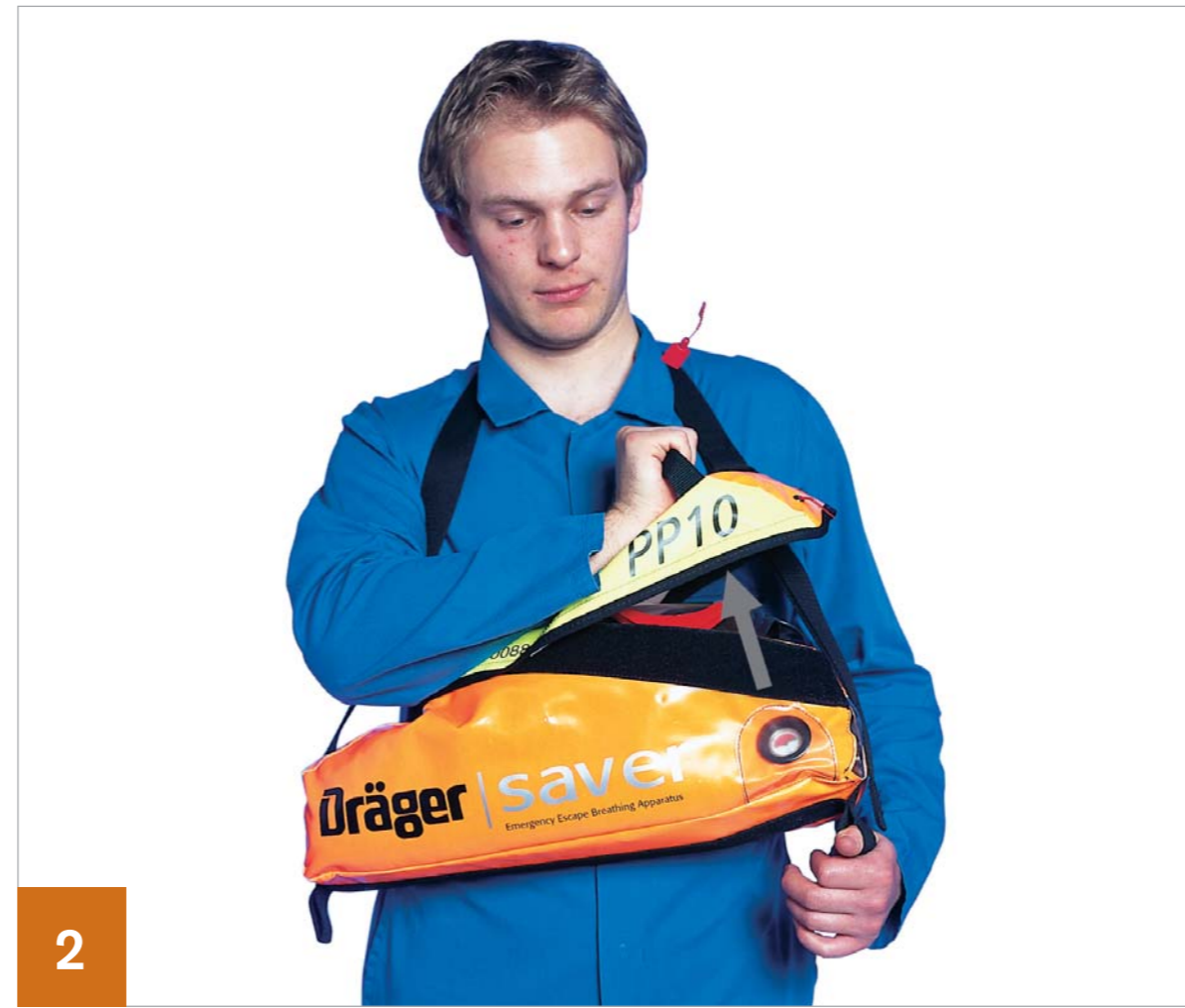
Dräger Saver PP Donning procedure



PROCEDURE



1 Place neck strap of carrying bag over head. Adjust length of strap until equipment sits in the centre of chest. Fix waistbelt, if fitted, and adjust by pulling the free end until equipment is secure and comfortable.



2 Grip the loop on the lid of the carrying bag and pull firmly upward to break the anti-tamper tag. Open the flap of the bag which then releases the locking clip from the valve turning on the air supply to the head.



3 Lift the facepiece from the carrying bag and immediately put on the facepiece.



4 Donning the Face Piece. Using one hand, hold the facepiece onto the face and with the other hand, pull the elastic head harness over the back of head, locating the harness centrally with the back of the head.



5 Tighten both lower straps evenly towards back of the head.



6 On achieving the face seal and on taking your first breath of inhalation the lung demand valve will automatically switch to positive pressure starting air supply to facepiece. Breathe normally and immediately leave the hazardous area by shortest and safest escape route.

Safety Warning:
Do not remove the equipment until in a safe area and clear of hazard.

PRE-OPERATIONAL CHECKS



Check contents gauge ensuring the cylinder is fully pressurised (i.e. 200 bar). The gauge needle must be inside the green segment of the gauge face.



An intact anti-tamper device ensures full performance. If this device is broken the unit must be checked.

EQUIPMENT

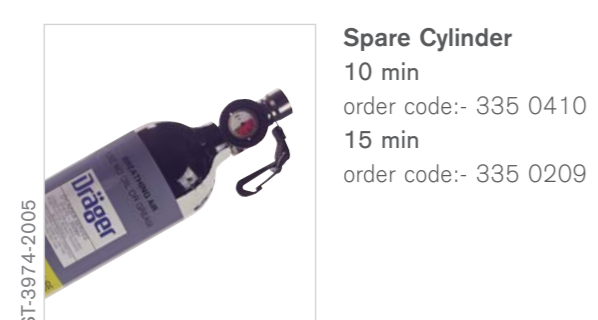


Saver PP10
order code:- 335 0408



Saver PP15
order code:- 335 0403

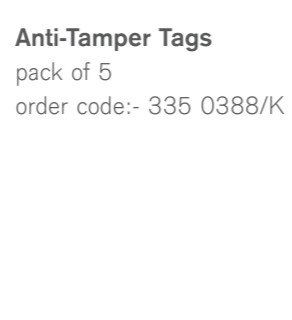
ACCESSORIES



Spare Cylinder
10 min order code:- 335 0410
15 min order code:- 335 0209



Anti-Tamper Tags
pack of 5 order code:- 335 0388/K



Anti-Static Bag 10min
order code:- 335 0424
Anti-Static Bag 15min
order code:- 335 0648



Panorama Nova Face Mask
order code:- R59024



Safety Wash
1 litre Dispenser order code:- 338 0164
1 litre Refill order code:- 338 0165
5 litre Dispenser order code:- 338 0166
5 litre Refill order code:- 338 0167



Waistbelt
order code:- 335 0396



Storage Cabinets
order code:- 335 0424
Wall Mounting Kit
order code:- 335 0431